



LEVANTÉ®

ALUMINUM ARCHITECTURAL COMPONENTS

LEVANTÉ®, LLC
901 NORTHVIEW ROAD
SUITE 100
WAUKESHA, WISCONSIN 53188

Project Name:

Part Name:

DECKING CLADDING 100mm

Used on assembly:

Part No.:

LDC419

Drawing Number:

AL-13690-D

REVISIONS

REV.	DESCRIPTION	DATE	APPROVED
B	DIMENSION INDICATED BY A RED LETTER "B" HAS BEEN MODIFIED FROM 0.594IN [15.10mm] TO 0.557IN [14.15mm]. SLOT CUTS HAVE BEEN ADDED ALONG PROFILE'S LENGTH.	4/20/2020	EASS
C	LOCATION OF SLOT HOLES HAS BEEN MODIFIED TO BE ALONG V-GROOVE SECTION. NUMBER OF SLOT HOLE ROWS HAS BEEN DECREASED FROM TWO ROWS TO ONE ROW	5/14/2020	EASS
D	SLOT WIDTH HAS BEEN DECREASED FROM 0.197" [5.00mm] TO 0.1695" [4.30mm]; SLOT LENGTH HAS BEEN MODIFIED FROM 0.591" [15.00mm] TO 0.6610" [16.80mm]; TYPICAL SPECING BETWEEN EACH SLOT HAS BEEN MODIFIED FROM 0.986" [25.05mm] FROM SLOTS EDGES TO 4.000" [101.6mm] FROM SLOT CENTERS; FIRST AND LAST SLOT STARTS/ENDS 1.000" [25.40mm] FROM EDGES.	6/1/2020	EASS



EXTRUSION PROFILE
SCALE 1:1

4

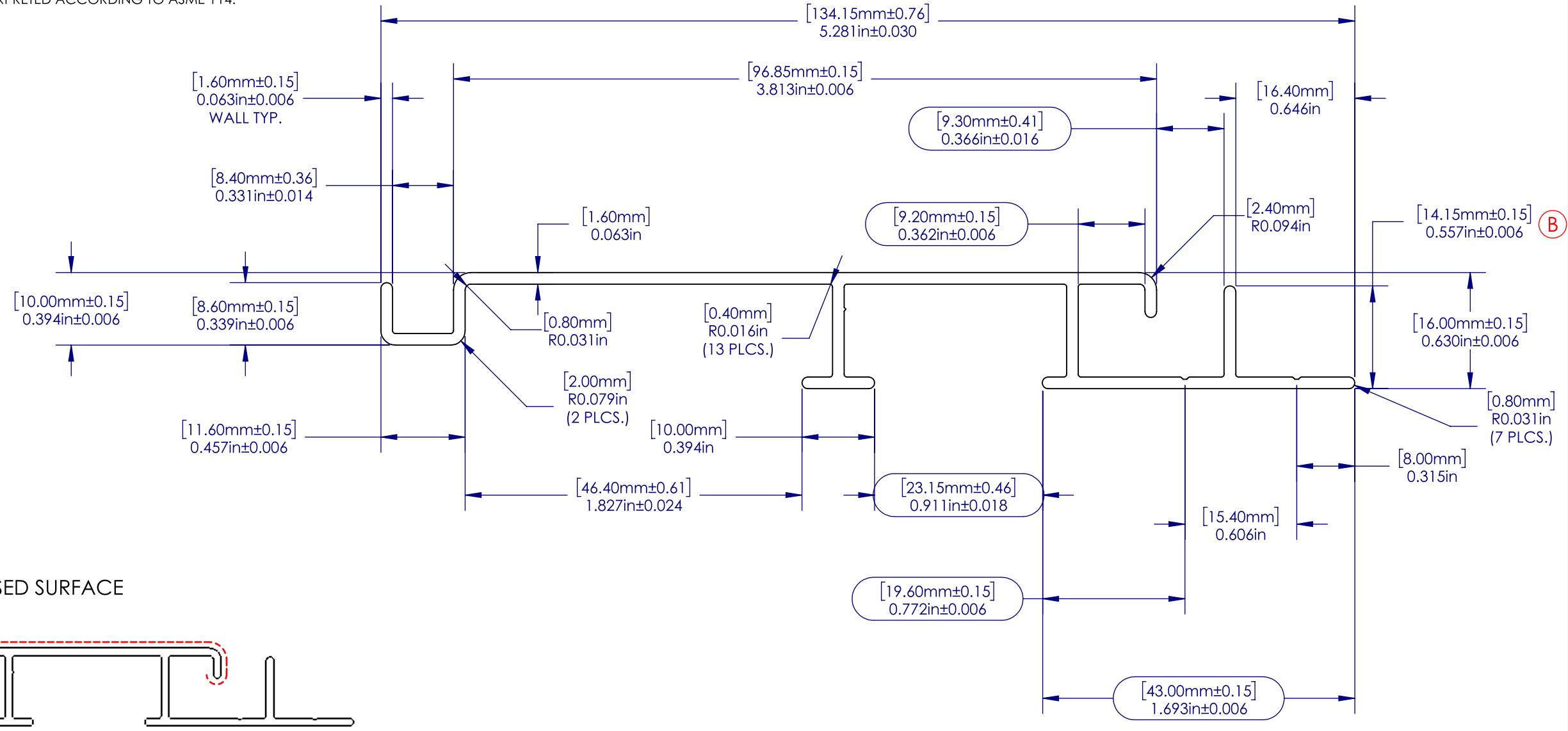
3

2

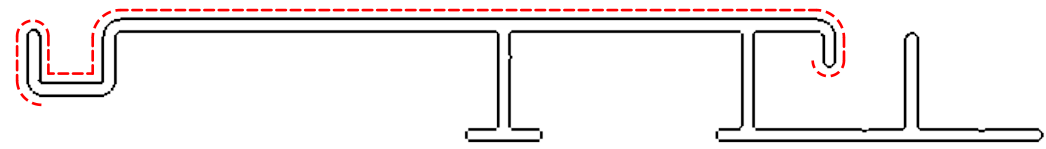
1

NOTES:

- 1. EXTRUSION SHALL BE STRAIGHT WITHIN 1.1mm PER 1M [0.015"/FOOT]
- 2. EXTRUSION TWIST 1.0DEG PER 1M [1.0DEG/FOOT]
- 3. EXTRUSION CROSS SECTIONAL AREA IS 0.5317 sq.in. [343.03mm sq.]
- 4. ALL RADII & FILLET RADIUS TO BE R0.016" [0.40mm] UNLESS OTHERWISE SPECIFIED
- 5. SECTIONAL MATERIAL THICKNESS 0.063"±0.006" [1.60mm±0.15mm] UNLESS OTHERWISE SPECIFIED
- 6. CRITICAL DIMENSIONS ARE SHOWN WITHIN ()
- 7. REFERENCE DIMENSIONS ARE SHOWN WITHIN ()
- 8. ALL DIMENSIONS ARE FINISHED PART DIMENSIONS
- 9. ALL DIMENSIONS AND TOLERANCES ARE TO BE INTERPRETED ACCORDING TO ASME Y14.



--- EXPOSED SURFACE



EXTRUSION PROFILE SCALE 1:1

WEIGHT/LENGTH	0.926	kg/m	0.620	lbs./ft.
AREA	343.03	sq. mm	0.5317	sq. in.
TOTAL PERIMETER	428.61	mm	16.8745	in.
OUTSIDE PERIMETER	428.61	mm	16.8745	in.
EXPOSED PERIMETER	138.82	mm	5.3864	in.

PROPRIETARY AND CONFIDENTIAL
 THE INFORMATION CONTAINED IN THIS DRAWING IS THE SOLE PROPERTY OF ALWOOD LLC. ANY REPRODUCTION IN PART OR AS A WHOLE WITHOUT THE WRITTEN PERMISSION OF ALWOOD LLC IS PROHIBITED.

UNLESS OTHERWISE SPECIFIED: DIMENSIONS ARE IN INCHES [MM] TOLERANCES:		NAME	DATE	
MILLIMETERS	INCHES	EASS	06/01/20	
X = ±1	[.X = ±0.1]			TITLE:
.X = ±.25	[.XX = ±0.01]			100mm - 4" Interlocking Board
.XX = ±10	[.XXX = ±0.005]			SIZE PART NO.
ANGLES	∠ = ± 1°			B LDC419
FRACTIONS	X/X = ± 1/64			REV
INTERPRET GEOMETRIC TOLERANCING PER:	MATERIAL			D
	6063-T5			SCALE: 1.5:1 WEIGHT: 11.927 SHEET 2 OF 3
	FINISH			
	Powder Coat			
NEXT ASSY	USED ON			
APPLICATION				
DO NOT SCALE DRAWING				

4

3

2

1

4

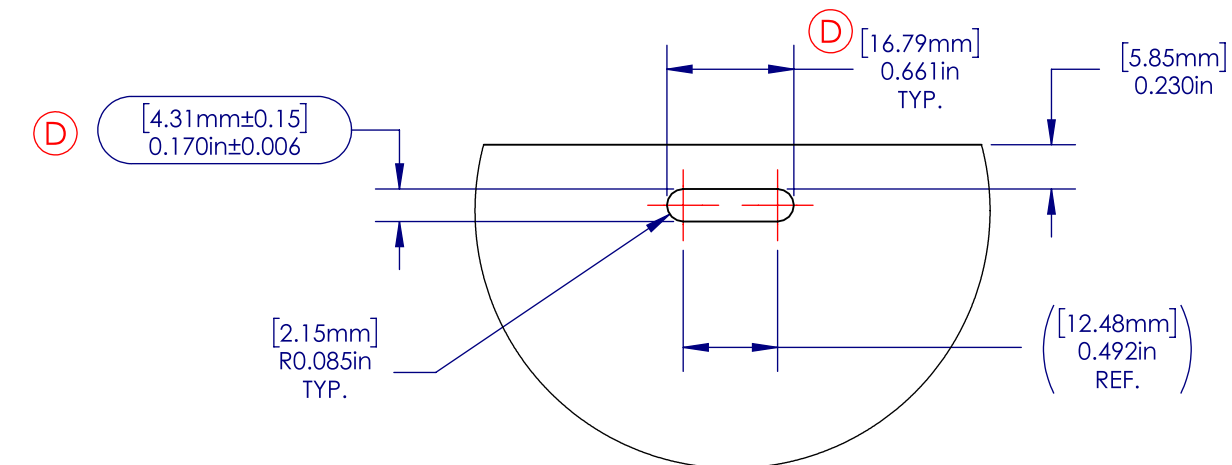
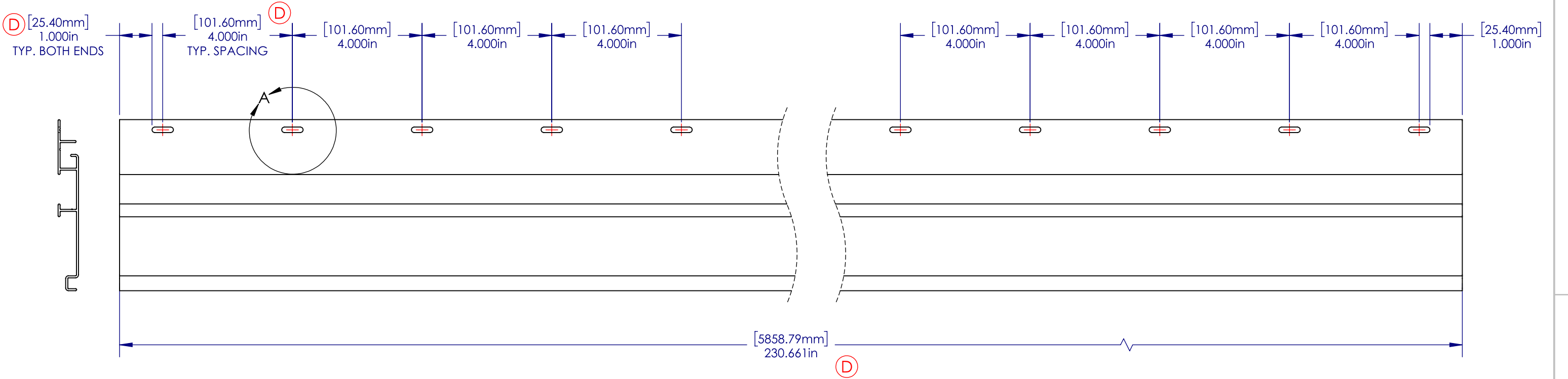
3

2

1


NOTES:

1. EXTRUSION SHALL BE STRAIGHT WITHIN 1.1mm PER 1M [0.015"/FOOT]
2. EXTRUSION TWIST 1.0DEG PER 1M [1.0DEG/FOOT]
3. EXTRUSION CROSS SECTIONAL AREA IS 0.5317 sq.in. [343.03mm sq.]
4. ALL RADII & FILLET RADIUS TO BE R0.016" [0.40mm] UNLESS OTHERWISE SPECIFIED
5. SECTIONAL MATERIAL THICKNESS 0.063"±0.006" [1.60mm±0.15mm] UNLESS OTHERWISE SPECIFIED
6. CRITICAL DIMENSIONS ARE SHOWN WITHIN (D)
7. REFERENCE DIMENSIONS ARE SHOWN WITHIN ()
8. ALL DIMENSIONS ARE FINISHED PART DIMENSIONS
9. ALL DIMENSIONS AND TOLERANCES ARE TO BE INTERPRETED ACCORDING TO ASME Y14.

DETAIL A
SCALE 1 : 1

PROPRIETARY AND CONFIDENTIAL
THE INFORMATION CONTAINED IN THIS
DRAWING IS THE SOLE PROPERTY OF
ALWOOD LLC. ANY REPRODUCTION
IN PART OR AS A WHOLE
WITHOUT THE WRITTEN PERMISSION OF
ALWOOD LLC IS PROHIBITED.

UNLESS OTHERWISE SPECIFIED: DIMENSIONS ARE IN INCHES [MM] TOLERANCES:		NAME	DATE
MILLIMETERS	INCHES	DRAWN	EASS
X = ±1	[.X = ±0.1]	CHECKED	06/01/20
.X = ±.25	[.XX = ±0.01]	ENG APPR.	
.XX = ±10	[.XXX = ±0.005]	MFG APPR.	
ANGLES		Q.A.	
∠ = ± 1°		COMMENTS:	
FRACTIONS			
X/X = ± 1/64			
INTERPRET GEOMETRIC TOLERANCING PER:			
MATERIAL	6063-T5		
FINISH	Powder Coat		
NEXT ASSY	USED ON		
APPLICATION			
		DO NOT SCALE DRAWING	

 LEVANTÉ ALUMINUM ARCHITECTURAL COMPONENTS	
TITLE:	
100mm - 4" Interlocking Board Fabrication Drawing	
SIZE	PART NO.
B	LDC419
REV	D
SCALE: 1:3	WEIGHT: 11.927
SHEET 3 OF 3	

4

3

2

1