



LEVANTÉ[®]
ALUMINUM ARCHITECTURAL COMPONENTS

LEVANTÉ[®], LLC
901 NORTHVIEW ROAD
SUITE 100
WAUKESHA, WISCONSIN 53188

Project Name:

Part Name:

150mm - 6" INTERLOCKING BOARD

Used on assembly:

Part No.:

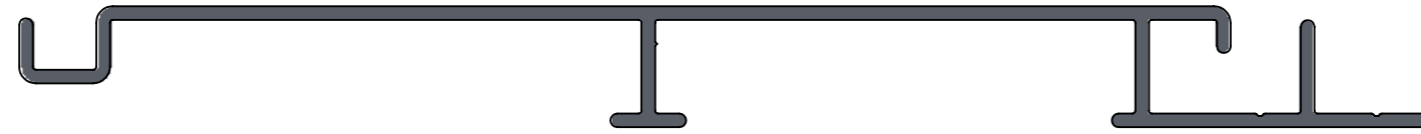
LDC619

Drawing Number:

AL-13689-D

REVISIONS

REV.	DESCRIPTION	DATE	APPROVED
B	DIMENSION INDICATED BY A RED LETTER "B" HAS BEEN MODIFIED FROM 0.587" [14.90mm] TO 0.557" [14.15mm]. SLOT CUTS HAVE BEEN ADDED ALONG PROFILE'S LENGTH.	4/17/2020	EASS
C	LOCATION OF SLOT HOLES HAVE BEEN MODIFIED TO BE ALONG V-GROOVE SECTION. NUMBER OF SLOT HOLE ROWS WAS DECREASED FROM TWO ROWS TO ONE ROW.	5/14/2020	EASS
D	SLOT WIDTH HAS BEEN DECREASED FROM 0.197" [5.00mm] TO 0.1695" [4.30mm]; SLOT LENGTH HAS BEEN MODIFIED FROM 0.591" [15.00mm] TO 0.6610" [16.80mm]; TYPICAL SPECING BETWEEN EACH SLOT HAS BEEN MODIFIED FROM 0.986" [25.05mm] FROM SLOTS EDGES TO 4.000" [101.60mm] FROM SLOT CENTERS; FIRST AND LAST SLOT STARTS/ENDS 1.000" [25.40mm] FROM EDGES.	6/1/2020	EASS



EXTRUSION PROFILE
SCALE 1:1

4

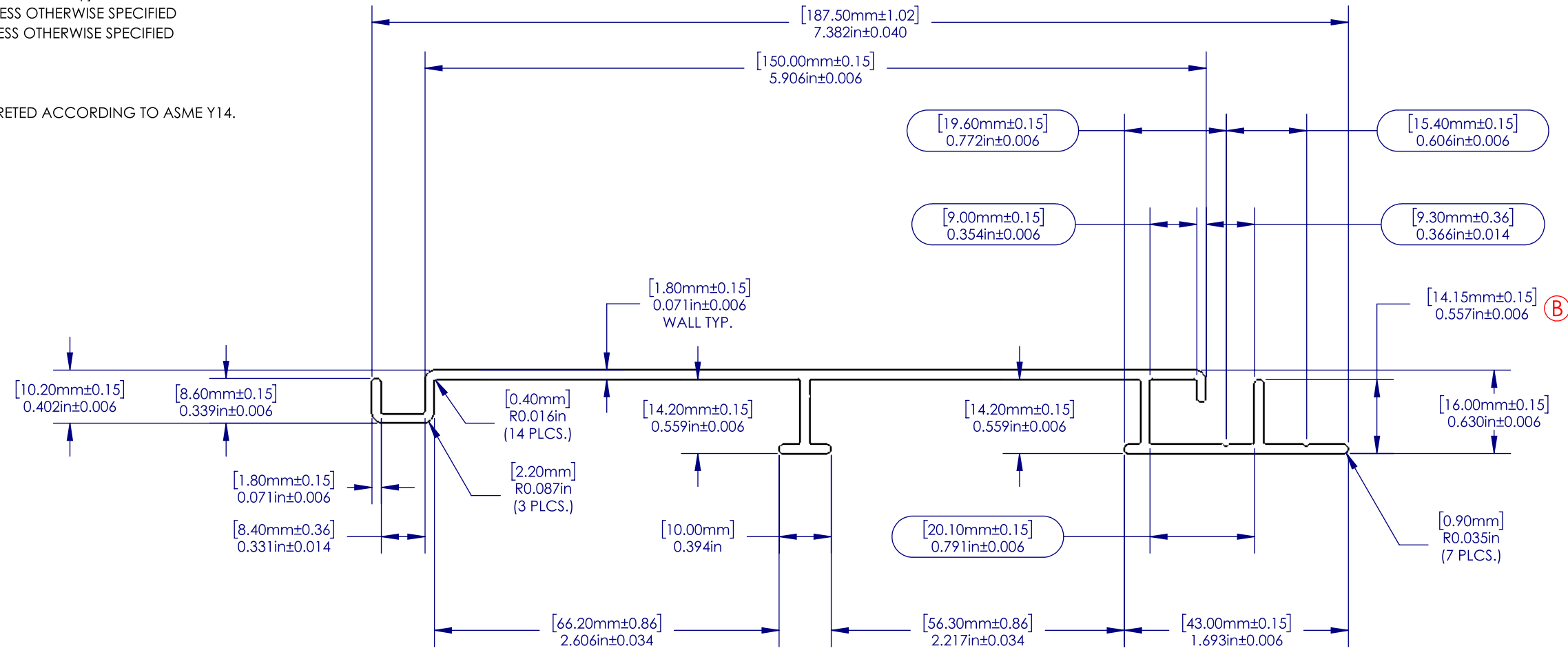
3

2

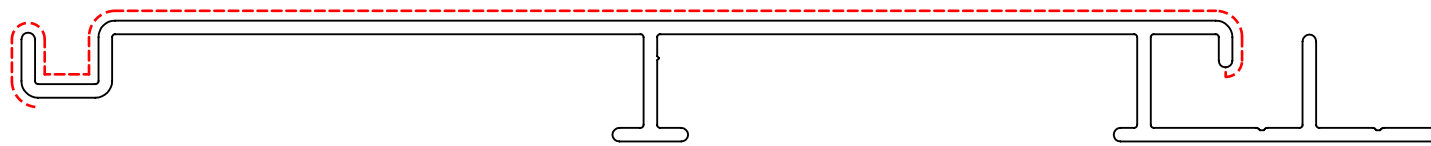
1

NOTES:

- 1. EXTRUSION SHALL BE STRAIGHT WITHIN 1.1mm PER 1M [0.015"/FOOT]
- 2. EXTRUSION TWIST 1.0DEG PER 1M [1.0DEG/FOOT]
- 3. EXTRUSION CROSS SECTIONAL AREA IS 0.7451 sq.in. [480.72mm sq.]
- 4. ALL RADII & FILLET RADIUS TO BE R0.016" [0.40mm] UNLESS OTHERWISE SPECIFIED
- 5. SECTIONAL MATERIAL THICKNESS 0.071" [1.80mm] UNLESS OTHERWISE SPECIFIED
- 6. CRITICAL DIMENSIONS ARE SHOWN WITHIN ()
- 7. REFERENCE DIMENSIONS ARE SHOWN WITHIN ()
- 8. ALL DIMENSIONS INCLUDE SURFACE FINISH
- 9. ALL DIMENSIONS AND TOLERANCES ARE TO BE INTERPRETED ACCORDING TO ASME Y14.



--- EXPOSED SURFACE



EXTRUSION PROFILE SCALE 1:1

WEIGHT/LENGTH	1.294	kg/m	0.867	lbs./ft.
AREA	479.37	sq. mm	0.7430	sq. in.
TOTAL PERIMETER	532.55	mm	20.9665	in.
OUTSIDE PERIMETER	532.55	mm	20.9665	in.
EXPOSED PERIMETER	190.38	mm	7.4952	in.

PROPRIETARY AND CONFIDENTIAL
 THE INFORMATION CONTAINED IN THIS DRAWING IS THE SOLE PROPERTY OF ALWOOD LLC. ANY REPRODUCTION IN PART OR AS A WHOLE WITHOUT THE WRITTEN PERMISSION OF ALWOOD LLC IS PROHIBITED.

UNLESS OTHERWISE SPECIFIED: DIMENSIONS ARE IN INCHES [MM] TOLERANCES:		NAME	DATE	
MILLIMETERS	INCHES	EASS	06/01/20	
X = ±1	[.X = ±0.1]	DRAWN		TITLE: <h3>150mm - 6" Interlocking Board</h3>
.X = ±.25	[.XX = ±0.01]	CHECKED		
.XX = ±10	[.XXX = ±0.005]	ENG APPR.		
ANGLES	∠ = ± 1°	MFG APPR.		
FRACTIONS	X/X = ± 1/64	Q.A.		
INTERPRET GEOMETRIC TOLERANCING PER:		COMMENTS:		SIZE PART NO. LDC619
MATERIAL		6063-T5		REV D
FINISH		Powder Coat		SCALE: 1:1 WEIGHT: 16.677 SHEET 2 OF 3
NEXT ASSY	USED ON	APPLICATION		
		DO NOT SCALE DRAWING		

4

3

2

1

A

A

4

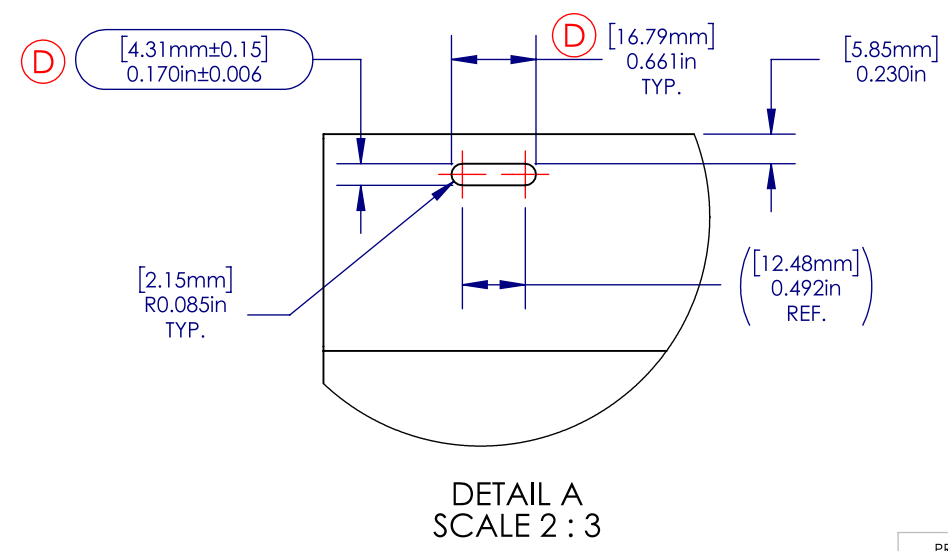
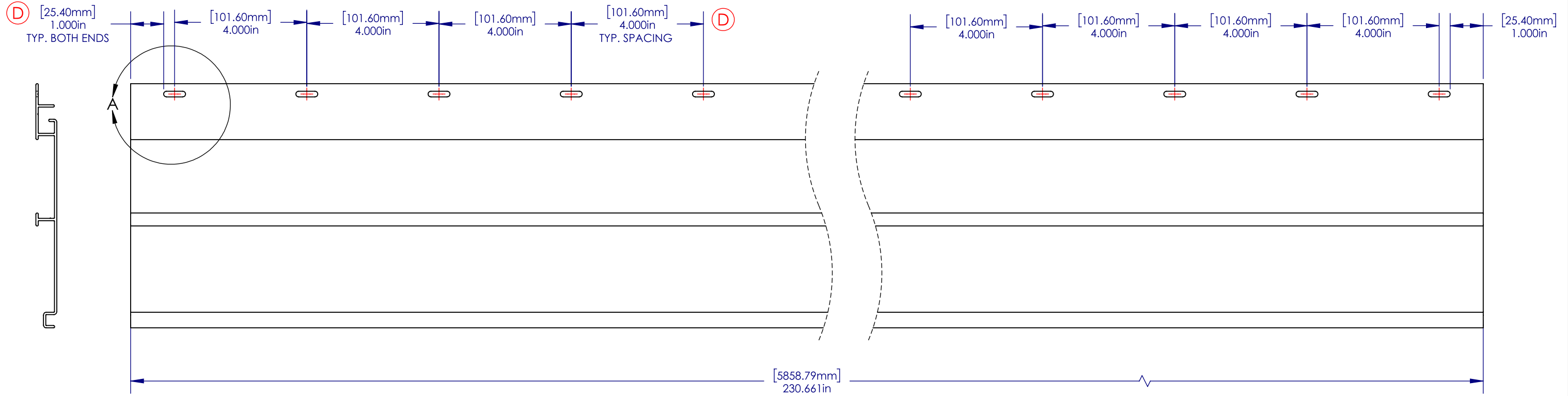
3

2

1

NOTES:

- 1. EXTRUSION SHALL BE STRAIGHT WITHIN 1.1mm PER 1M [0.015"/FOOT]
- 2. EXTRUSION TWIST 1.0DEG PER 1M [1.0DEG/FOOT]
- 3. EXTRUSION CROSS SECTIONAL AREA IS 0.7451 sq.in. [480.72mm sq.]
- 4. ALL RADII & FILLET RADIUS TO BE R0.016" [0.40mm] UNLESS OTHERWISE SPECIFIED
- 5. SECTIONAL MATERIAL THICKNESS 0.071" [1.80mm] UNLESS OTHERWISE SPECIFIED
- 6. CRITICAL DIMENSIONS ARE SHOWN WITHIN
- 7. REFERENCE DIMENSIONS ARE SHOWN WITHIN ()
- 8. ALL DIMENSIONS INCLUDE SURFACE FINISH
- 9. ALL DIMENSIONS AND TOLERANCES ARE TO BE INTERPRETED ACCORDING TO ASME Y14.



DETAIL A
SCALE 2 : 3

PROPRIETARY AND CONFIDENTIAL
 THE INFORMATION CONTAINED IN THIS
 DRAWING IS THE SOLE PROPERTY OF
 ALWOOD LLC. ANY REPRODUCTION
 IN PART OR AS A WHOLE
 WITHOUT THE WRITTEN PERMISSION OF
 ALWOOD LLC IS PROHIBITED.

		UNLESS OTHERWISE SPECIFIED: DIMENSIONS ARE IN INCHES [MM] TOLERANCES:		NAME	DATE
		MILLIMETERS	INCHES	EASS	06/01/20
		X = ±1	[.X = ± 0.1]	DRAWN	
		.X = ±.25	[.XX = ±0.01]	CHECKED	
		.XX = ±10	[.XXX = ±0.005]	ENG APPR.	
		ANGLES	∠ = ± 1°	MFG APPR.	
		FRACTIONS	X/X = ± 1/64	Q.A.	
		INTERPRET GEOMETRIC TOLERANCING PER:		COMMENTS:	
		MATERIAL	6063-T5		
		FINISH	Powder Coat		
NEXT ASSY	USED ON				
APPLICATION		DO NOT SCALE DRAWING			

TITLE:		
150mm - 6" Interlocking Board Fabrication Drawing		
SIZE	PART NO.	REV
B	LDC619	D
SCALE: 1:3	WEIGHT: 16.677	SHEET 3 OF 3

4

3

2

1

A

A

B

B