



LEVANTÉ[®]
ALUMINUM ARCHITECTURAL COMPONENTS

LEVANTÉ[®], LLC
901 NORTHVIEW ROAD
SUITE 100
WAUKESHA, WISCONSIN 53188

Project Name:

Part Name:

3 WAY POST BASE

Used on assembly:

Part No.:

LFPOSTBASE

Drawing Number:

HLM-SM-3630-000-A

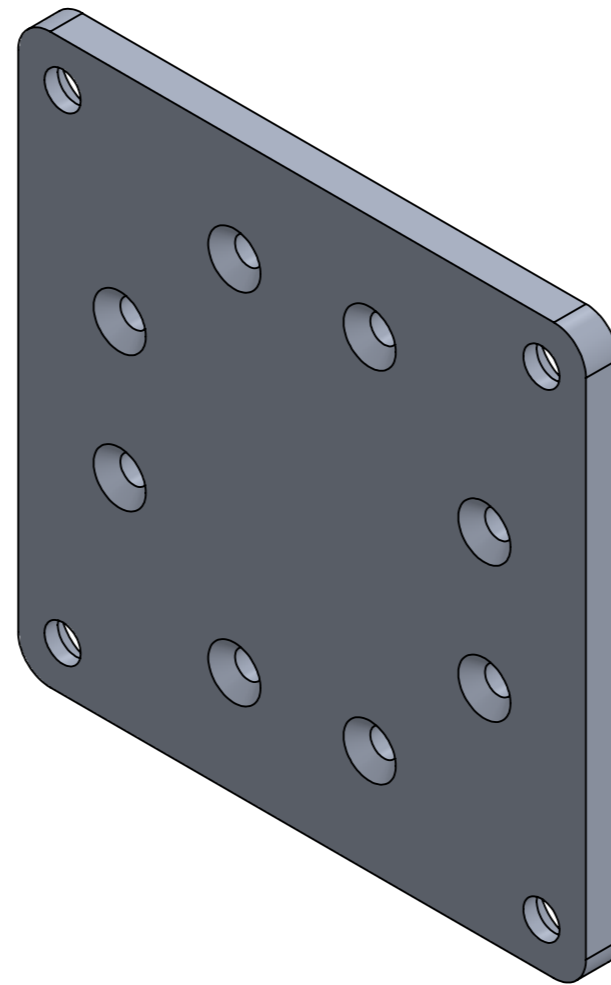
REVISIONS

REV.

DESCRIPTION

DATE

APPROVED



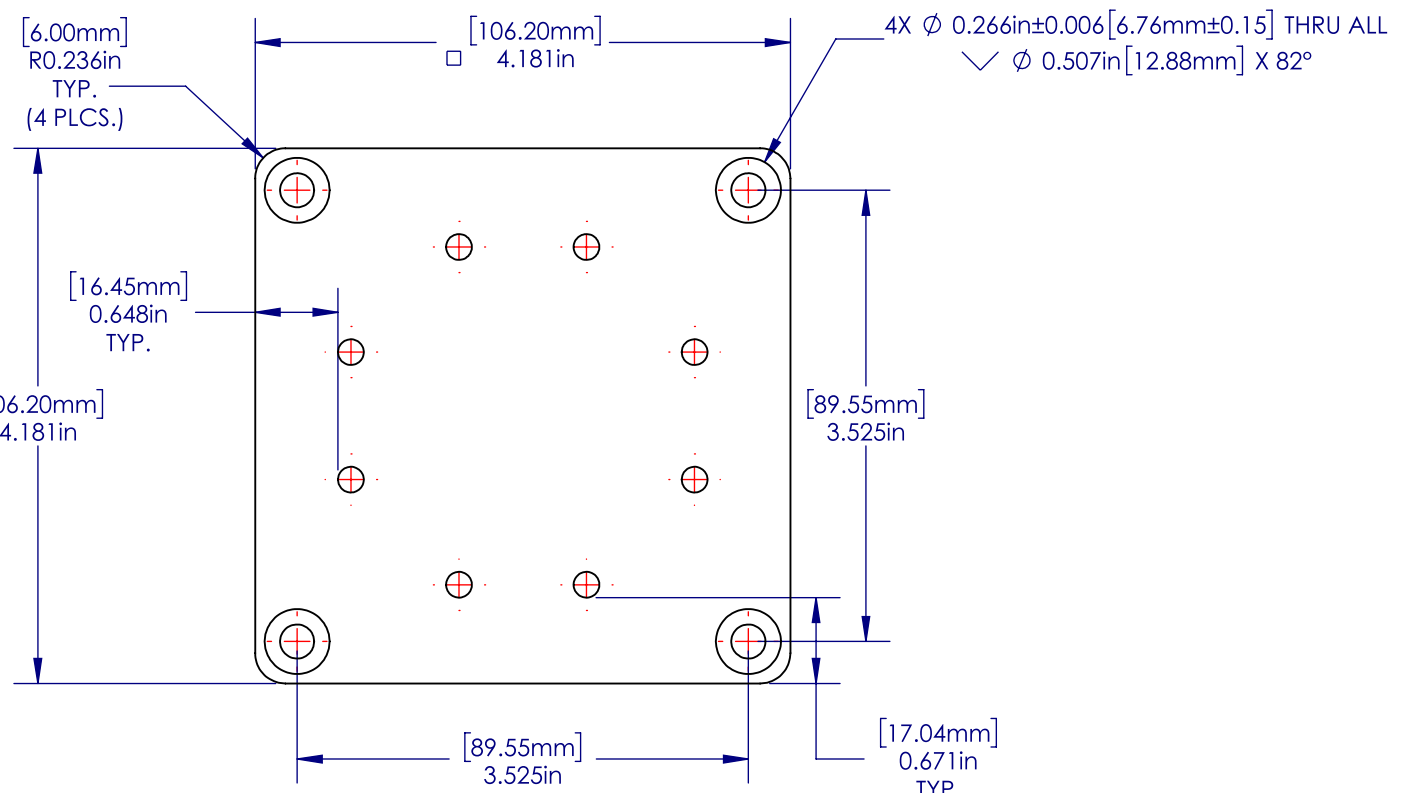
ISOMETRIC VIEW
SCALE 1:1

4

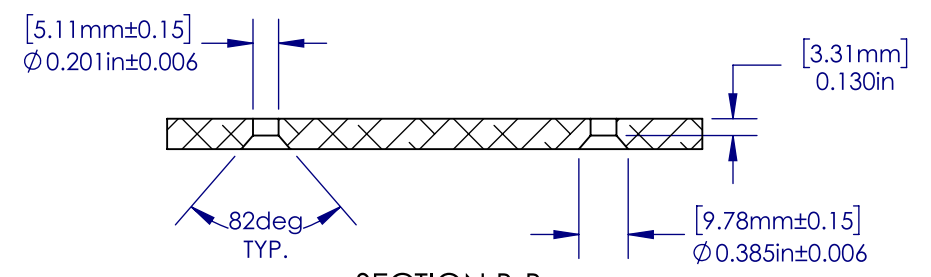
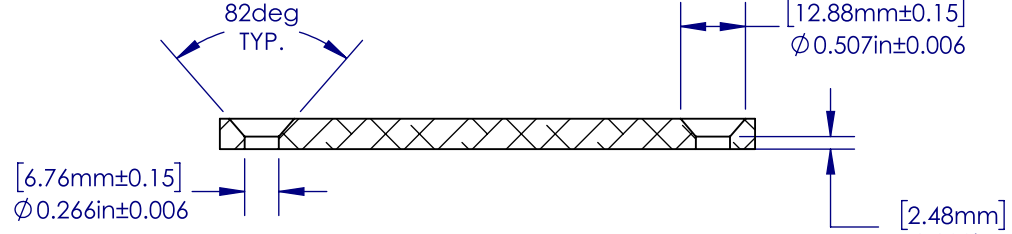
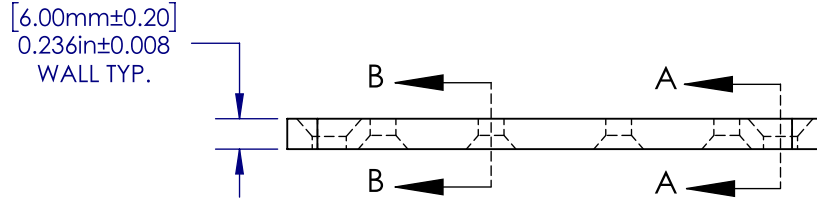
3

2

1

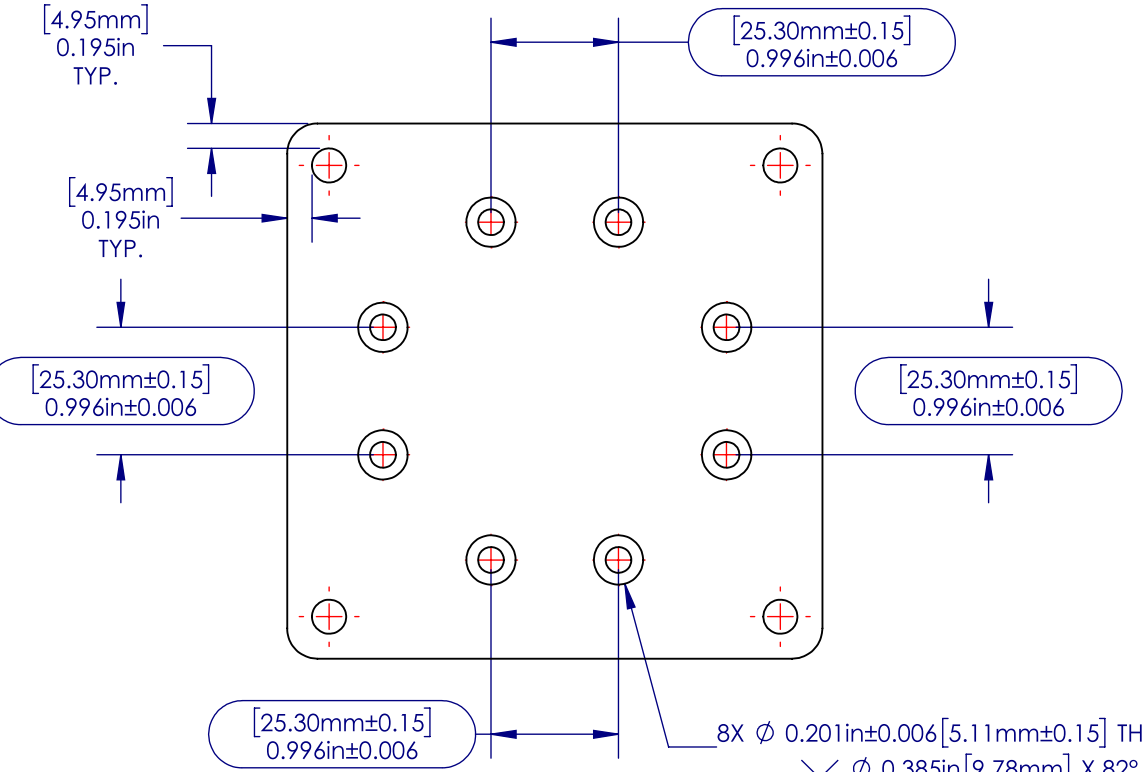


- NOTES:
1. REFER TO CAD FILE FOR TOOLING
 2. ALL RADII & FILLET RADIUS TO BE R0.236" [6.00mm] UNLESS OTHERWISE SPECIFIED
 3. SECTIONAL MATERIAL THICKNESS 0.236" ± 0.008" [6.00mm ± 0.20mm] UNLESS OTHERWISE SPECIFIED
 4. CRITICAL DIMENSIONS ARE SHOWN WITHIN ()
 5. REFERENCE DIMENSIONS ARE SHOWN WITHIN ()
 6. ALL DIMENSIONS ARE FINISHED PART DIMENSIONS
 7. REMOVE ALL SHARP EDGES AND BURRS
 8. SURFACE FINISH TO BE APPLIED ON ALL FACES AND EDGES
 9. SURFACE FINISH AS PER CUSTOMER'S PURCHASE ORDER
 10. ALL DIMENSIONS AND TOLERANCES ARE TO BE INTERPRETED ACCORDING TO ASME Y14.



SECTION A-A

SECTION B-B



PROPRIETARY AND CONFIDENTIAL
 THE INFORMATION CONTAINED IN THIS DRAWING IS THE SOLE PROPERTY OF ALWOOD LLC. ANY REPRODUCTION IN PART OR AS A WHOLE WITHOUT THE WRITTEN PERMISSION OF ALWOOD LLC IS PROHIBITED.

UNLESS OTHERWISE SPECIFIED: DIMENSIONS ARE IN INCHES [MM] TOLERANCES:		NAME	DATE
MILLIMETERS	INCHES	DRAWN	EASS
X = ±1	[.X = ± 0.1]	CHECKED	
.X = ±.25	[.XX = ± 0.01]	ENG APPR.	
.XX = ±10	[.XXX = ± 0.005]	MFG APPR.	
ANGLES	∠ = ± 1°	Q.A.	
FRACTIONS	X/X = ± 1/64	COMMENTS:	
INTERPRET GEOMETRIC TOLERANCING PER:			
MATERIAL			
5052-H32			
FINISH Powder Coat			
NEXT ASSY	USED ON		
APPLICATION			
DO NOT SCALE DRAWING			



TITLE:		
3 Way Post Base		
SIZE	PART NO.	REV
B	LFPOSTBASE	A
SCALE: 1:1.5		WEIGHT: 0.381
SHEET 2 OF 2		

4

3

2

1