



LEVANTÉ®
ALUMINUM ARCHITECTURAL COMPONENTS

LEVANTÉ®, LLC
901 NORTHVIEW ROAD
SUITE 100
WAUKESHA, WISCONSIN 53188

Project Name:

Part Name:

DECKING CLADDING 100mm

Used on assembly:

Part No.:

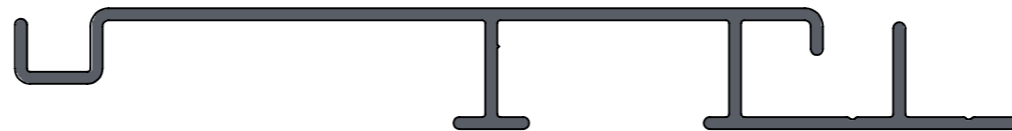
LDC419

Drawing Number:

AL-13690-D

REVISIONS

| REV. | DESCRIPTION | DATE | APPROVED |
|------|--|-----------|----------|
| B | DIMENSION INDICATED BY A RED LETTER "B" HAS BEEN MODIFIED FROM 0.594IN [15.10mm] TO 0.557IN [14.15mm]. SLOT CUTS HAVE BEEN ADDED ALONG PROFILE'S LENGTH. | 4/20/2020 | EASS |
| C | LOCATION OF SLOT HOLES HAS BEEN MODIFIED TO BE ALONG V-GROOVE SECTION. NUMBER OF SLOT HOLE ROWS HAS BEEN DECREASED FROM TWO ROWS TO ONE ROW | 5/14/2020 | EASS |
| D | SLOT WIDTH HAS BEEN DECREASED FROM 0.197" [5.00mm] TO 0.1695" [4.30mm]; SLOT LENGTH HAS BEEN MODIFIED FROM 0.591" [15.00mm] TO 0.6610" [16.80mm]; TYPICAL SPECING BETWEEN EACH SLOT HAS BEEN MODIFIED FROM 0.986" [25.05mm] FROM SLOTS EDGES TO 4.000" [101.6mm] FROM SLOT CENTERS; FIRST AND LAST SLOT STARTS/ENDS 1.000" [25.40mm] FROM EDGES. | 6/1/2020 | EASS |



EXTRUSION PROFILE
SCALE 1:1

4

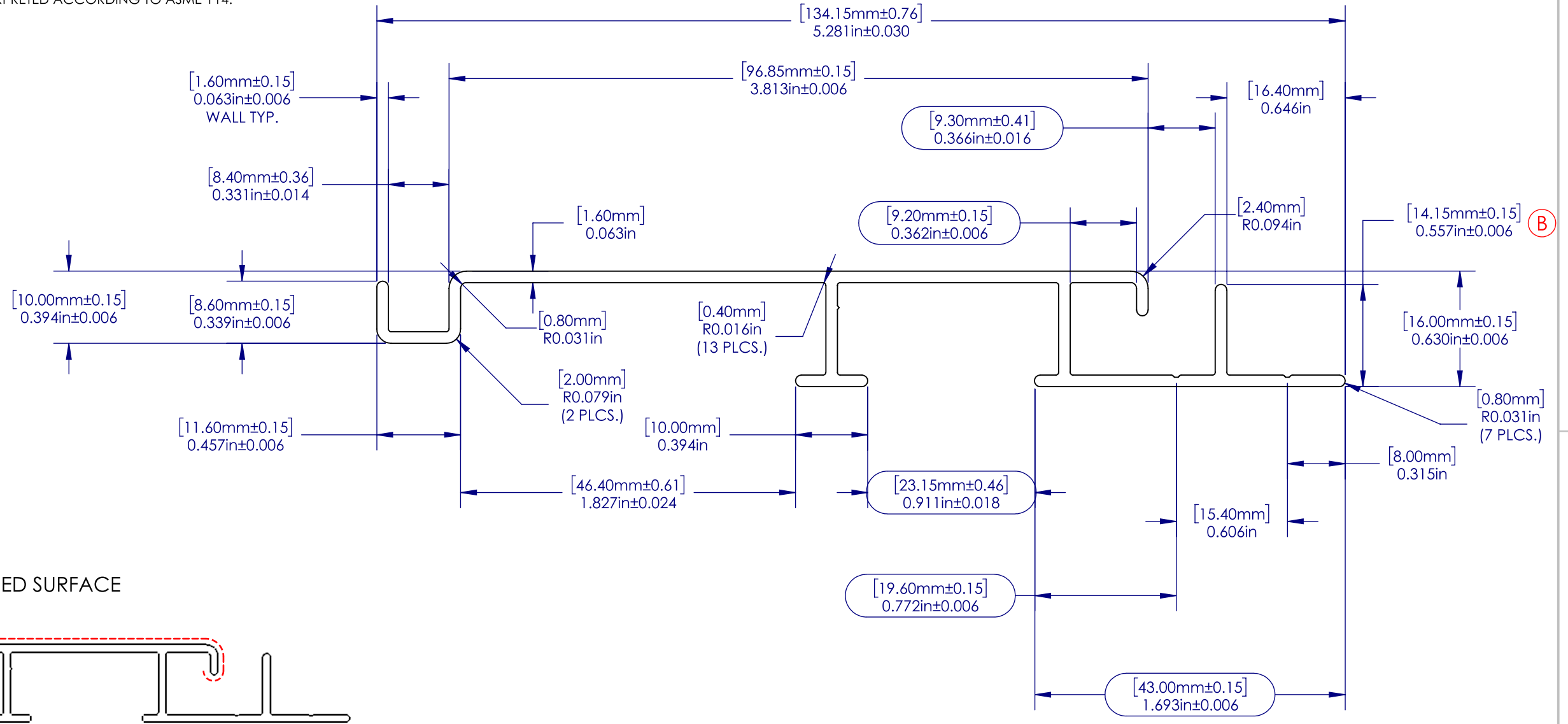
3

2

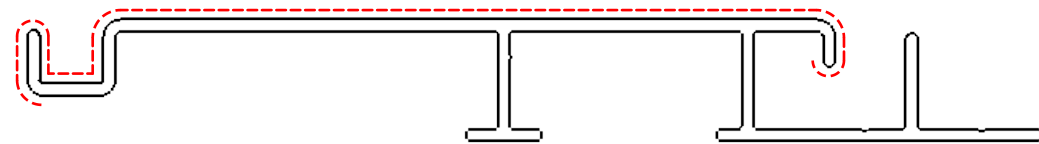
1

NOTES:

1. EXTRUSION SHALL BE STRAIGHT WITHIN 1.1mm PER 1M [0.015"/FOOT]
2. EXTRUSION TWIST 1.0DEG PER 1M [1.0DEG/FOOT]
3. EXTRUSION CROSS SECTIONAL AREA IS 0.5317 sq.in. [343.03mm sq.]
4. ALL RADII & FILLET RADIUS TO BE R0.016" [0.40mm] UNLESS OTHERWISE SPECIFIED
5. SECTIONAL MATERIAL THICKNESS 0.063"±0.006" [1.60mm±0.15mm] UNLESS OTHERWISE SPECIFIED
6. CRITICAL DIMENSIONS ARE SHOWN WITHIN ()
7. REFERENCE DIMENSIONS ARE SHOWN WITHIN ()
8. ALL DIMENSIONS ARE FINISHED PART DIMENSIONS
9. ALL DIMENSIONS AND TOLERANCES ARE TO BE INTERPRETED ACCORDING TO ASME Y14.



--- EXPOSED SURFACE



EXTRUSION PROFILE
SCALE 1:1

| | | | | |
|-------------------|--------|--------|---------|----------|
| WEIGHT/LENGTH | 0.926 | kg/m | 0.620 | lbs./ft. |
| AREA | 343.03 | sq. mm | 0.5317 | sq. in. |
| TOTAL PERIMETER | 428.61 | mm | 16.8745 | in. |
| OUTSIDE PERIMETER | 428.61 | mm | 16.8745 | in. |
| EXPOSED PERIMETER | 138.82 | mm | 5.3864 | in. |

PROPRIETARY AND CONFIDENTIAL
THE INFORMATION CONTAINED IN THIS DRAWING IS THE SOLE PROPERTY OF ALWOOD LLC. ANY REPRODUCTION IN PART OR AS A WHOLE WITHOUT THE WRITTEN PERMISSION OF ALWOOD LLC IS PROHIBITED.

| | | | | |
|---|----------------------|------|----------|--|
| UNLESS OTHERWISE SPECIFIED: DIMENSIONS ARE IN INCHES [MM] TOLERANCES: | | NAME | DATE | |
| MILLIMETERS | INCHES | EASS | 06/01/20 | |
| X = ±1 | [.X = ±0.1] | | | TITLE: |
| .X = ±.25 | [.XX = ±0.01] | | | 100mm - 4" Interlocking Board |
| .XX = ±10 | [.XXX = ±0.005] | | | SIZE PART NO. |
| ANGLES | ∠ = ± 1° | | | B LDC419 |
| FRACTIONS | X/X = ± 1/64 | | | REV |
| INTERPRET GEOMETRIC TOLERANCING PER: | | | | D |
| MATERIAL | 6063-T5 | | | SCALE: 1.5:1 WEIGHT: 11.927 SHEET 2 OF 3 |
| FINISH | Powder Coat | | | |
| NEXT ASSY | USED ON | | | |
| APPLICATION | DO NOT SCALE DRAWING | | | |

4

3

2

1

4

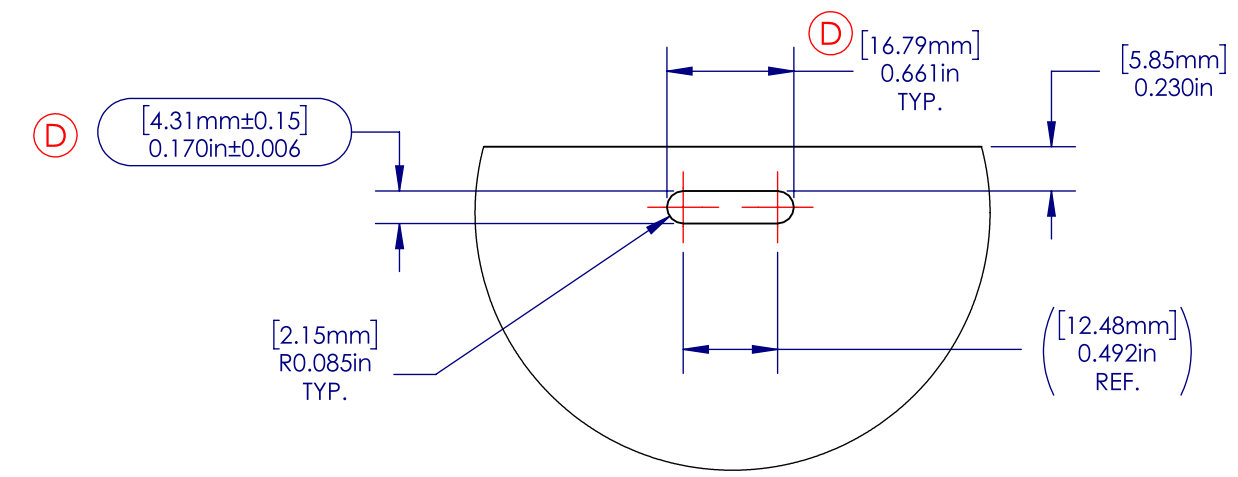
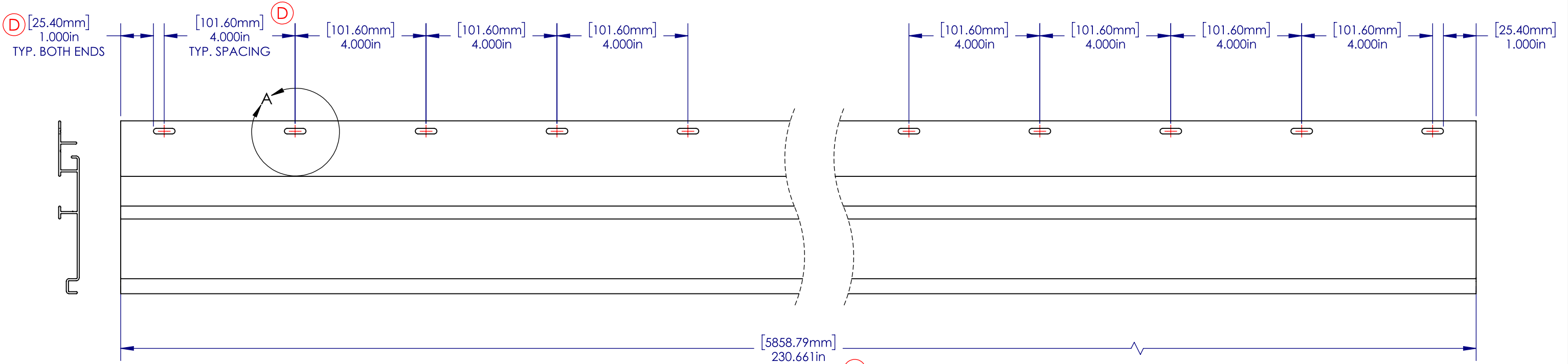
3

2

1

NOTES:

- 1. EXTRUSION SHALL BE STRAIGHT WITHIN 1.1mm PER 1M [0.015"/FOOT]
- 2. EXTRUSION TWIST 1.0DEG PER 1M [1.0DEG/FOOT]
- 3. EXTRUSION CROSS SECTIONAL AREA IS 0.5317 sq.in. [343.03mm sq.]
- 4. ALL RADII & FILLET RADIUS TO BE R0.016" [0.40mm] UNLESS OTHERWISE SPECIFIED
- 5. SECTIONAL MATERIAL THICKNESS 0.063"±0.006" [1.60mm±0.15mm] UNLESS OTHERWISE SPECIFIED
- 6. CRITICAL DIMENSIONS ARE SHOWN WITHIN (D)
- 7. REFERENCE DIMENSIONS ARE SHOWN WITHIN ()
- 8. ALL DIMENSIONS ARE FINISHED PART DIMENSIONS
- 9. ALL DIMENSIONS AND TOLERANCES ARE TO BE INTERPRETED ACCORDING TO ASME Y14.



PROPRIETARY AND CONFIDENTIAL
 THE INFORMATION CONTAINED IN THIS DRAWING IS THE SOLE PROPERTY OF ALWOOD LLC. ANY REPRODUCTION IN PART OR AS A WHOLE WITHOUT THE WRITTEN PERMISSION OF ALWOOD LLC IS PROHIBITED.

| | | | | | |
|---|-----------------|-----------|------|--|----------|
| UNLESS OTHERWISE SPECIFIED: DIMENSIONS ARE IN INCHES [MM] TOLERANCES: | | NAME | DATE | | |
| MILLIMETERS | INCHES | DRAWN | EASS | | 06/01/20 |
| X = ±1 | [.X = ±0.1] | CHECKED | | | |
| .X = ±.25 | [.XX = ±0.01] | ENG APPR. | | | |
| .XX = ±10 | [.XXX = ±0.005] | MFG APPR. | | | |
| ANGLES | ∠ = ± 1° | Q.A. | | | |
| FRACTIONS | X/X = ± 1/64 | COMMENTS: | | | |
| INTERPRET GEOMETRIC TOLERANCING PER: | | | | | |
| MATERIAL | | | | | |
| 6063-T5 | | | | | |
| FINISH | | | | | |
| Powder Coat | | | | | |
| NEXT ASSY | USED ON | | | | |
| | | | | | |
| APPLICATION | | | | | |
| DO NOT SCALE DRAWING | | | | | |

TITLE:
**100mm - 4" Interlocking Board
 Fabrication Drawing**

SIZE PART NO. REV
B LDC419 D

SCALE: 1:3 WEIGHT: 11.927 SHEET 3 OF 3

4

3

2

1