



**LEVANTÉ<sup>®</sup>**  
ALUMINUM ARCHITECTURAL COMPONENTS

**LEVANTÉ<sup>®</sup>, LLC**  
901 NORTHVIEW ROAD  
SUITE 100  
WAUKESHA, WISCONSIN 53188

Project Name:

Part Name:

150mm - 6" INTERLOCKING BOARD

Used on assembly:

Part No.:

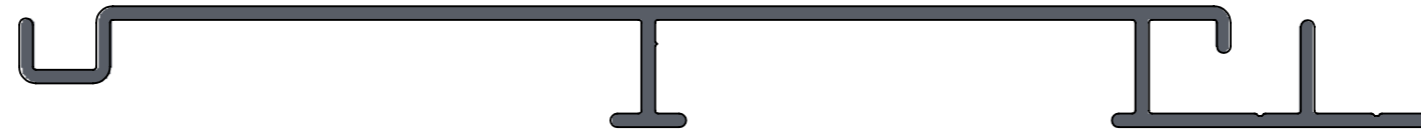
LDC619

Drawing Number:

AL-13689-D

REVISIONS

REV.	DESCRIPTION	DATE	APPROVED
B	DIMENSION INDICATED BY A RED LETTER "B" HAS BEEN MODIFIED FROM 0.587" [14.90mm] TO 0.557" [14.15mm]. SLOT CUTS HAVE BEEN ADDED ALONG PROFILE'S LENGTH.	4/17/2020	EASS
C	LOCATION OF SLOT HOLES HAVE BEEN MODIFIED TO BE ALONG V-GROOVE SECTION. NUMBER OF SLOT HOLE ROWS WAS DECREASED FROM TWO ROWS TO ONE ROW.	5/14/2020	EASS
D	SLOT WIDTH HAS BEEN DECREASED FROM 0.197" [5.00mm] TO 0.1695" [4.30mm]; SLOT LENGTH HAS BEEN MODIFIED FROM 0.591" [15.00mm] TO 0.6610" [16.80mm]; TYPICAL SPECING BETWEEN EACH SLOT HAS BEEN MODIFIED FROM 0.986" [25.05mm] FROM SLOTS EDGES TO 4.000" [101.60mm] FROM SLOT CENTERS; FIRST AND LAST SLOT STARTS/ENDS 1.000" [25.40mm] FROM EDGES.	6/1/2020	EASS



EXTRUSION PROFILE  
SCALE 1:1

4

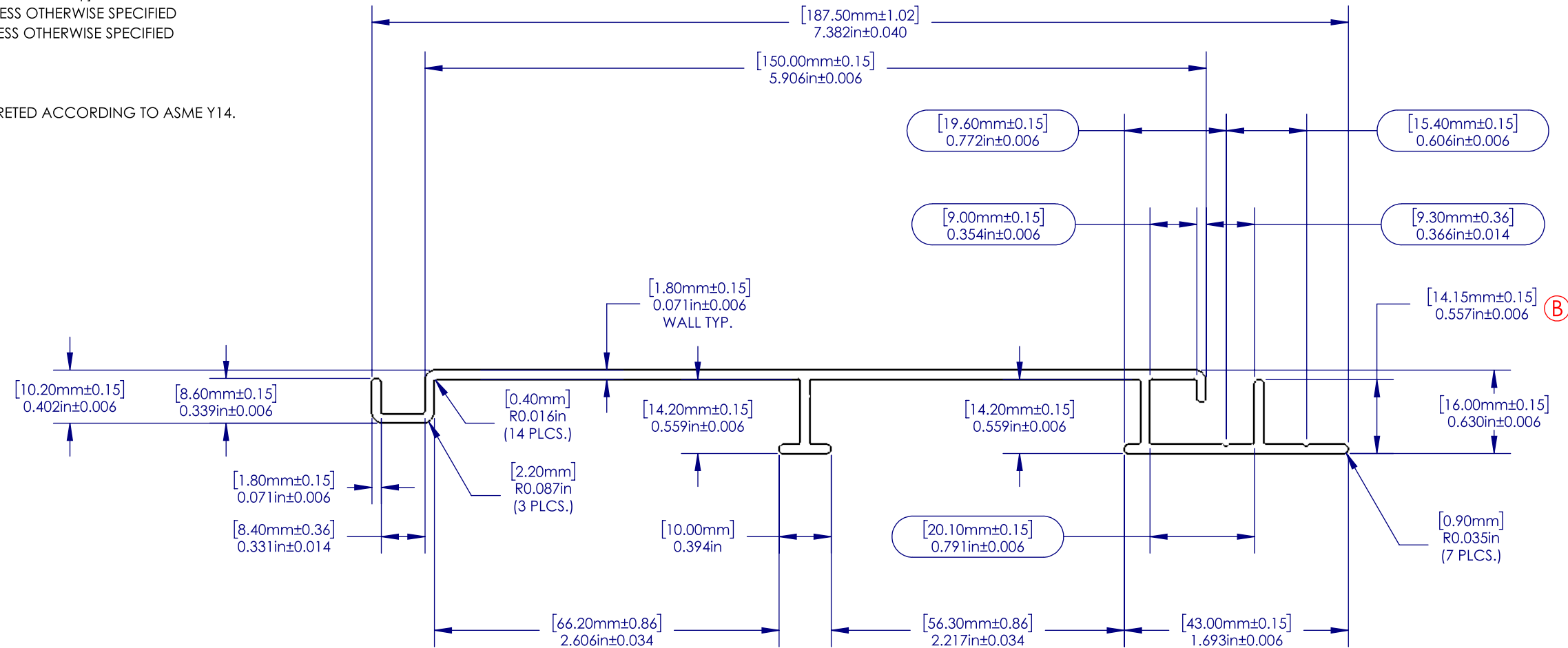
3

2

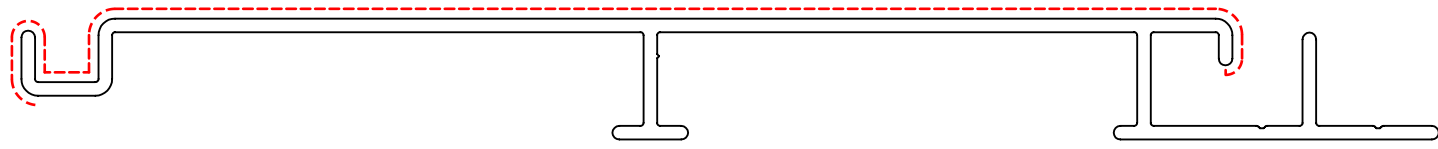
1

NOTES:

- 1. EXTRUSION SHALL BE STRAIGHT WITHIN 1.1mm PER 1M [0.015"/FOOT]
- 2. EXTRUSION TWIST 1.0DEG PER 1M [1.0DEG/FOOT]
- 3. EXTRUSION CROSS SECTIONAL AREA IS 0.7451 sq.in. [480.72mm sq.]
- 4. ALL RADII & FILLET RADIUS TO BE R0.016" [0.40mm] UNLESS OTHERWISE SPECIFIED
- 5. SECTIONAL MATERIAL THICKNESS 0.071" [1.80mm] UNLESS OTHERWISE SPECIFIED
- 6. CRITICAL DIMENSIONS ARE SHOWN WITHIN ( )
- 7. REFERENCE DIMENSIONS ARE SHOWN WITHIN ( )
- 8. ALL DIMENSIONS INCLUDE SURFACE FINISH
- 9. ALL DIMENSIONS AND TOLERANCES ARE TO BE INTERPRETED ACCORDING TO ASME Y14.



--- EXPOSED SURFACE



EXTRUSION PROFILE  
SCALE 1:1

WEIGHT/LENGTH	1.294	kg/m	0.867	lbs./ft.
AREA	479.37	sq. mm	0.7430	sq. in.
TOTAL PERIMETER	532.55	mm	20.9665	in.
OUTSIDE PERIMETER	532.55	mm	20.9665	in.
EXPOSED PERIMETER	190.38	mm	7.4952	in.

PROPRIETARY AND CONFIDENTIAL  
THE INFORMATION CONTAINED IN THIS DRAWING IS THE SOLE PROPERTY OF ALWOOD LLC. ANY REPRODUCTION IN PART OR AS A WHOLE WITHOUT THE WRITTEN PERMISSION OF ALWOOD LLC IS PROHIBITED.

UNLESS OTHERWISE SPECIFIED: DIMENSIONS ARE IN INCHES [MM] TOLERANCES:		NAME	DATE	
MILLIMETERS	INCHES	EASS	06/01/20	
X = ±1	[.X = ± 0.1]	DRAWN		<b>TITLE:</b> <b>150mm - 6"</b> <b>Interlocking Board</b>
.X = ±.25	[.XX = ±0.01]	CHECKED		
.XX = ±10	[.XXX = ±0.005]	ENG APPR.		
ANGLES	∠ = ± 1°	MFG APPR.		
FRACTIONS	X/X = ± 1/64	Q.A.		
INTERPRET GEOMETRIC TOLERANCING PER:		COMMENTS:		<b>SIZE</b> PART NO. SCALE: 1:1 WEIGHT: 16.677 SHEET 2 OF 3
MATERIAL		6063-T5		<b>REV</b> D
FINISH		Powder Coat		
NEXT ASSY	USED ON	APPLICATION		
		DO NOT SCALE DRAWING		

4

3

2

1

4

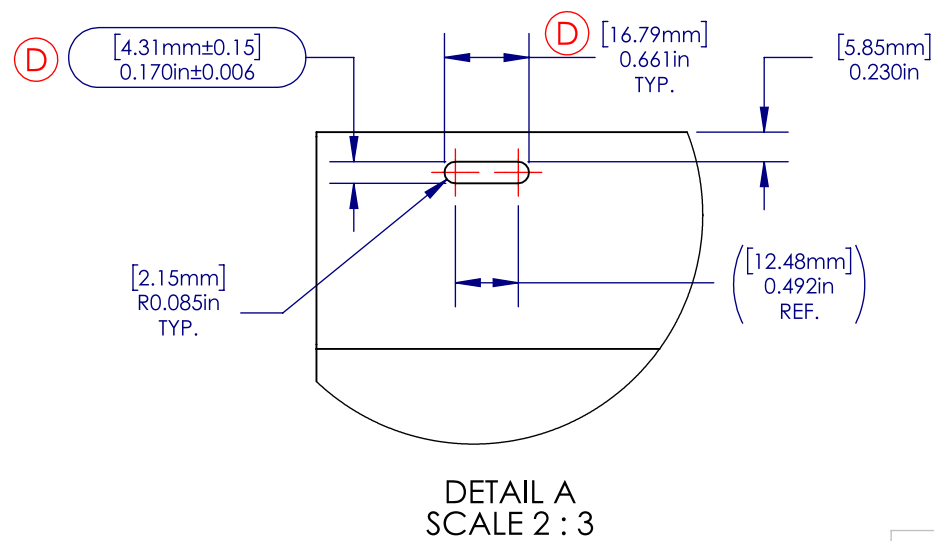
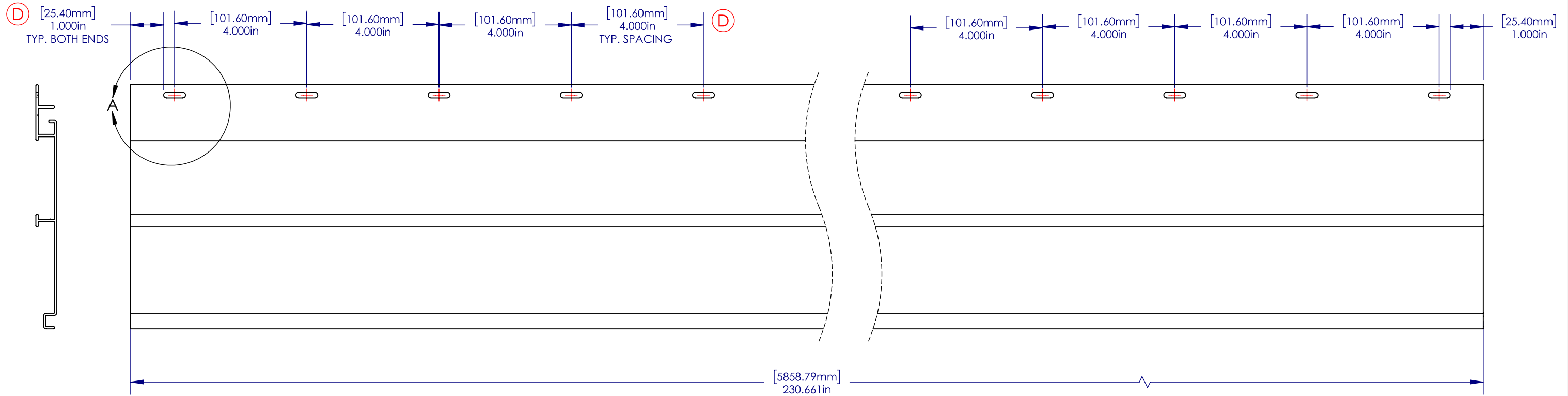
3

2

1


NOTES:

- 1. EXTRUSION SHALL BE STRAIGHT WITHIN 1.1mm PER 1M [0.015"/FOOT]
- 2. EXTRUSION TWIST 1.0DEG PER 1M [1.0DEG/FOOT]
- 3. EXTRUSION CROSS SECTIONAL AREA IS 0.7451 sq.in. [480.72mm sq.]
- 4. ALL RADII & FILLET RADIUS TO BE R0.016" [0.40mm] UNLESS OTHERWISE SPECIFIED
- 5. SECTIONAL MATERIAL THICKNESS 0.071" [1.80mm] UNLESS OTHERWISE SPECIFIED
- 6. CRITICAL DIMENSIONS ARE SHOWN WITHIN
- 7. REFERENCE DIMENSIONS ARE SHOWN WITHIN ( )
- 8. ALL DIMENSIONS INCLUDE SURFACE FINISH
- 9. ALL DIMENSIONS AND TOLERANCES ARE TO BE INTERPRETED ACCORDING TO ASME Y14.



DETAIL A  
SCALE 2 : 3

PROPRIETARY AND CONFIDENTIAL  
 THE INFORMATION CONTAINED IN THIS  
 DRAWING IS THE SOLE PROPERTY OF  
 ALWOOD LLC. ANY REPRODUCTION  
 IN PART OR AS A WHOLE  
 WITHOUT THE WRITTEN PERMISSION OF  
 ALWOOD LLC IS PROHIBITED.

		UNLESS OTHERWISE SPECIFIED: DIMENSIONS ARE IN INCHES [MM] TOLERANCES:				NAME		DATE	
		MILLIMETERS X = ±1 .X = ±.25 .XX = ±10		INCHES [.X = ± 0.1] [.XX = ±0.01] [.XXX = ±0.005]		DRAWN		EASS 06/01/20	
		ANGLES ∠ = ± 1°				CHECKED			
		FRACTIONS X/X = ± 1/64				ENG APPR.			
		INTERPRET GEOMETRIC TOLERANCING PER:				MFG APPR.			
		MATERIAL 6063-T5				Q.A.			
		FINISH Powder Coat				COMMENTS:			
NEXT ASSY		USED ON							
APPLICATION		DO NOT SCALE DRAWING							
				 <b>LEVANTÉ</b> ALUMINUM ARCHITECTURAL COMPONENTS		TITLE:			
						<b>150mm - 6" Interlocking Board          Fabrication Drawing</b>			
SIZE		PART NO.		REV					
B		LDC619		D					
SCALE: 1:3		WEIGHT: 16.677		SHEET 3 OF 3					

4

3

2

1