



**LEVANTÉ<sup>®</sup>**  
ALUMINUM ARCHITECTURAL COMPONENTS

**LEVANTÉ<sup>®</sup>, LLC**  
901 NORTHVIEW ROAD  
SUITE 100  
WAUKESHA, WISCONSIN 53188

Project Name:

Part Name:

1 WAY POST CAP

Used on assembly:

Part No.:

LF1POSTCAP

Drawing Number:

HLM-SM-3629-000-A

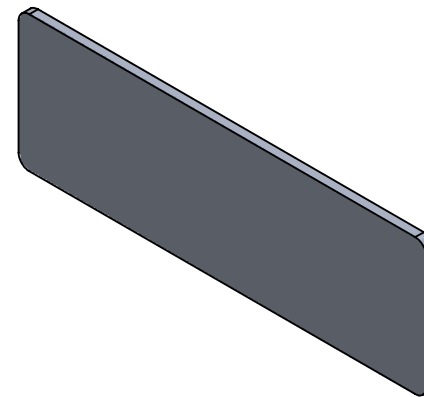
REVISIONS

REV.

DESCRIPTION

DATE

APPROVED



ISOMETRIC VIEW  
SCALE 1:1

4

3

2

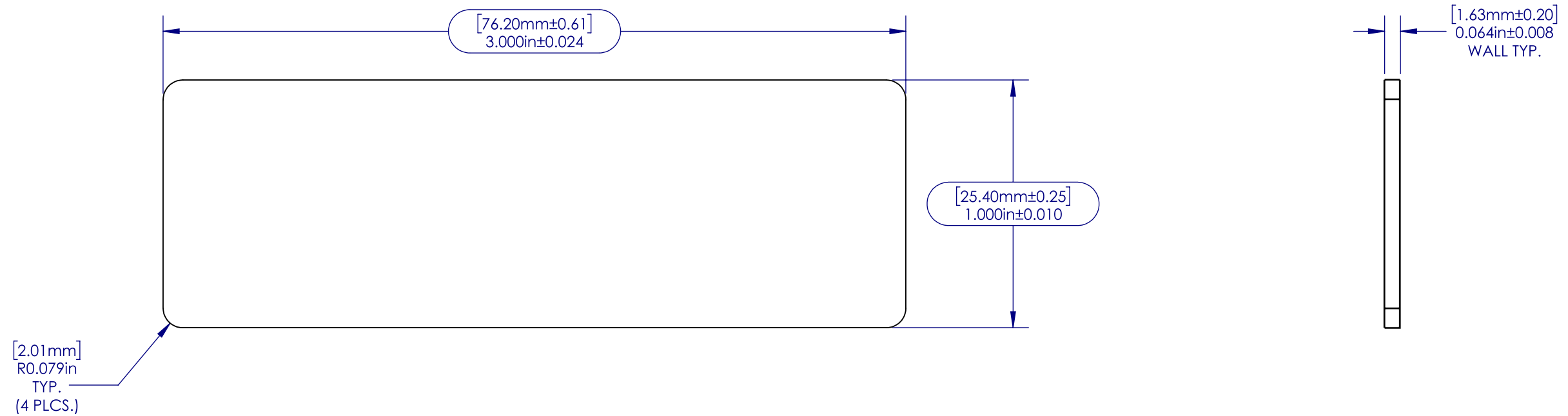
1

NOTES:

- 1. REFER TO CAD FILE FOR TOOLING
- 2. ALL RADII & FILLET RADIUS TO BE R0.079" [2.00mm] UNLESS OTHERWISE SPECIFIED
- 3. SECTIONAL MATERIAL THICKNESS 0.064" ±0.008" [1.64mm ±0.20mm] UNLESS OTHERWISE SPECIFIED
- 4. CRITICAL DIMENSIONS ARE SHOWN WITHIN ( )
- 5. REFERENCE DIMENSIONS ARE SHOWN WITHIN ( )
- 6. ALL DIMENSIONS ARE FINISHED PART DIMENSIONS
- 7. SURFACE FINISH TO BE APPLIED ALONG ALL EDGES AND FACES
- 8. SURFACE FINISH TO BE BLACK POWDER COAT OR AS PER CUSTOMER'S PURCHASE ORDER
- 9. ALL DIMENSIONS AND TOLERANCES ARE TO BE INTERPRETED ACCORDING TO ASME Y14.

B

B



A

A

PROPRIETARY AND CONFIDENTIAL  
 THE INFORMATION CONTAINED IN THIS  
 DRAWING IS THE SOLE PROPERTY OF  
 ALWOOD LLC. ANY REPRODUCTION  
 IN PART OR AS A WHOLE  
 WITHOUT THE WRITTEN PERMISSION OF  
 ALWOOD LLC IS PROHIBITED.

		UNLESS OTHERWISE SPECIFIED: DIMENSIONS ARE IN INCHES [MM] TOLERANCES:		NAME	DATE		
		MILLIMETERS	INCHES	DRAWN	EASS		07/03/20
		X = ±1 .X = ±.25 .XX = ±10	[.X = ± 0.1] [.XX = ±0.01] [.XXX = ±0.005]	CHECKED			
		ANGLES	∠ = ± 1°	ENG APPR.			
		FRACTIONS	X/X = ± 1/64	MFG APPR.			
		INTERPRET GEOMETRIC TOLERANCING PER:		Q.A.			
		MATERIAL		COMMENTS:		TITLE:	
		5052-H32				1 Way Post Cap	
NEXT ASSY	USED ON	FINISH				SIZE	
		Powder Coat				B	
APPLICATION		DO NOT SCALE DRAWING				PART NO.	
						LF1POSTCAP	
						REV	
						A	
						SCALE: 2:1	
						WEIGHT: 0.019	
						SHEET 2 OF 2	

4

3

2

1