



**LEVANTÉ<sup>®</sup>**  
ALUMINUM ARCHITECTURAL COMPONENTS

**LEVANTÉ<sup>®</sup>, LLC**  
901 NORTHVIEW ROAD  
SUITE 100  
WAUKESHA, WISCONSIN 53188

Project Name:

Part Name:

3 WAY POST BASE

Used on assembly:

Part No.:

LFPOSTBASE

Drawing Number:

HLM-SM-3630-000-A

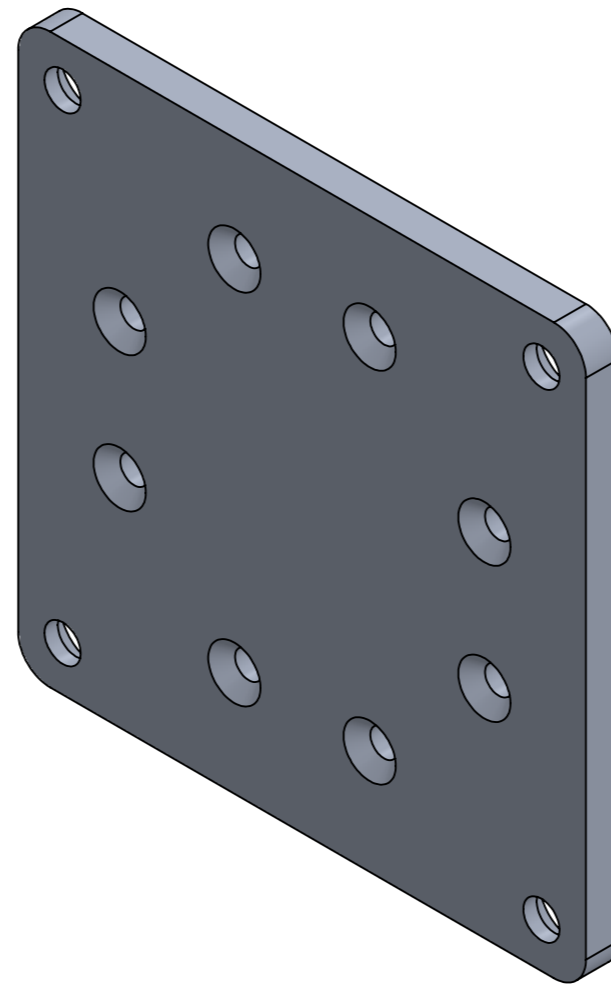
REVISIONS

REV.

DESCRIPTION

DATE

APPROVED



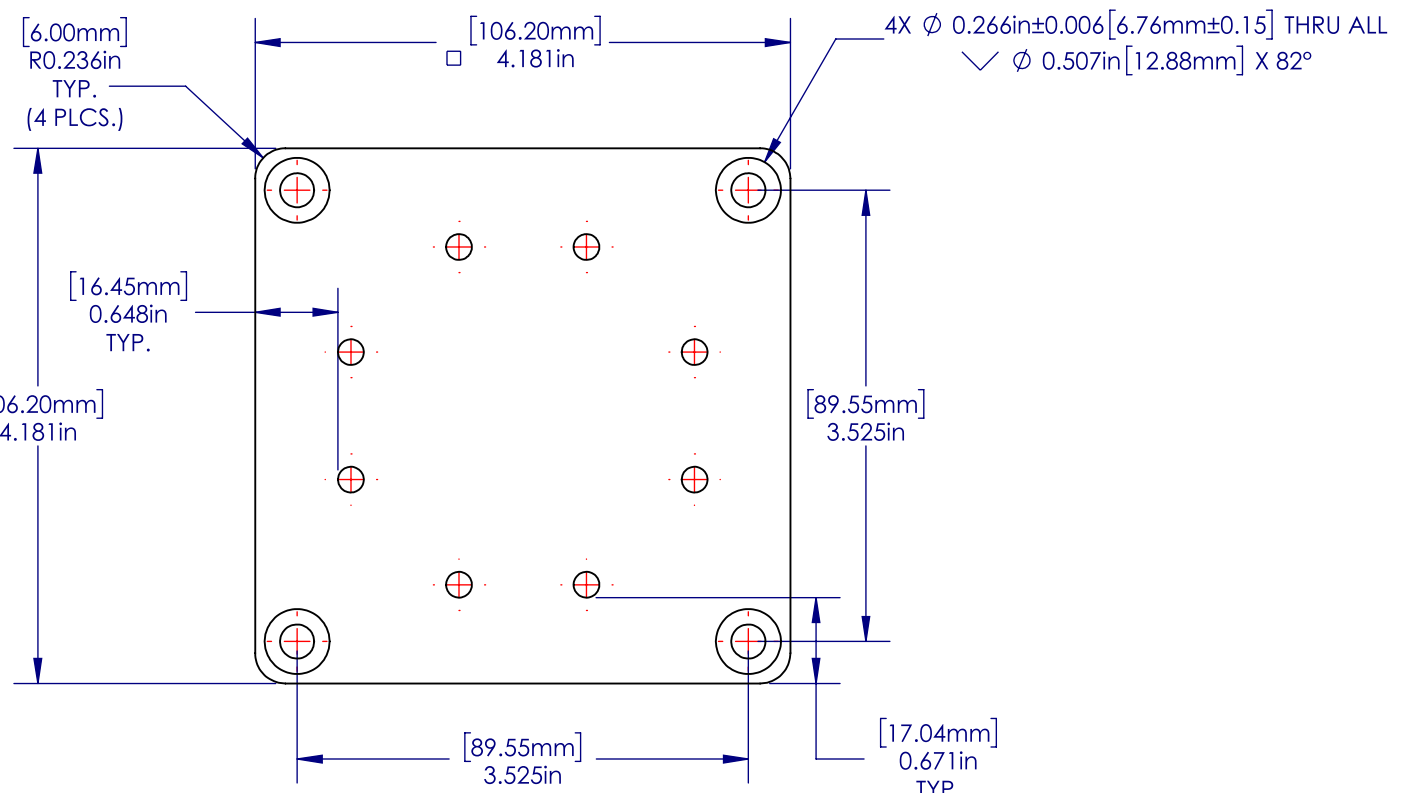
ISOMETRIC VIEW  
SCALE 1:1

4

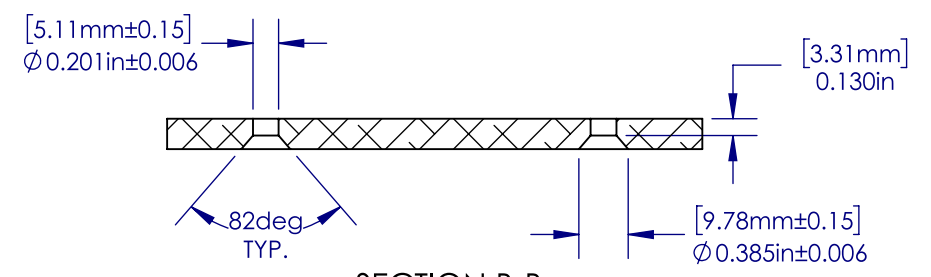
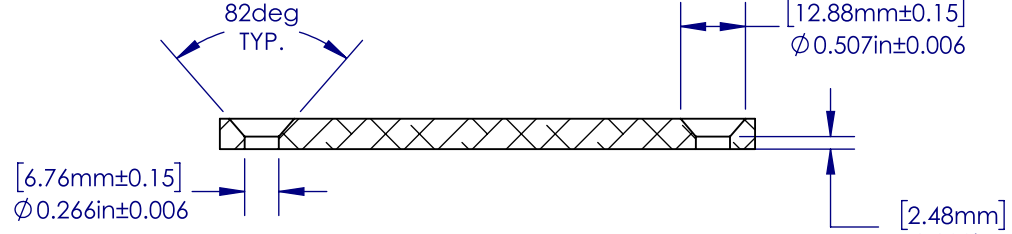
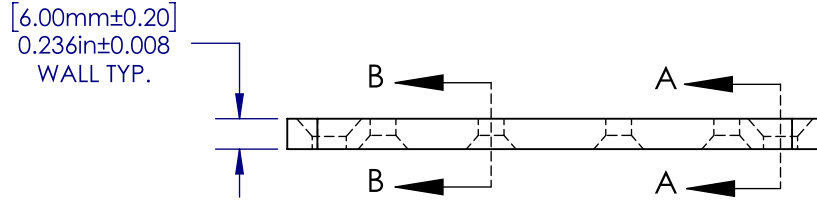
3

2

1

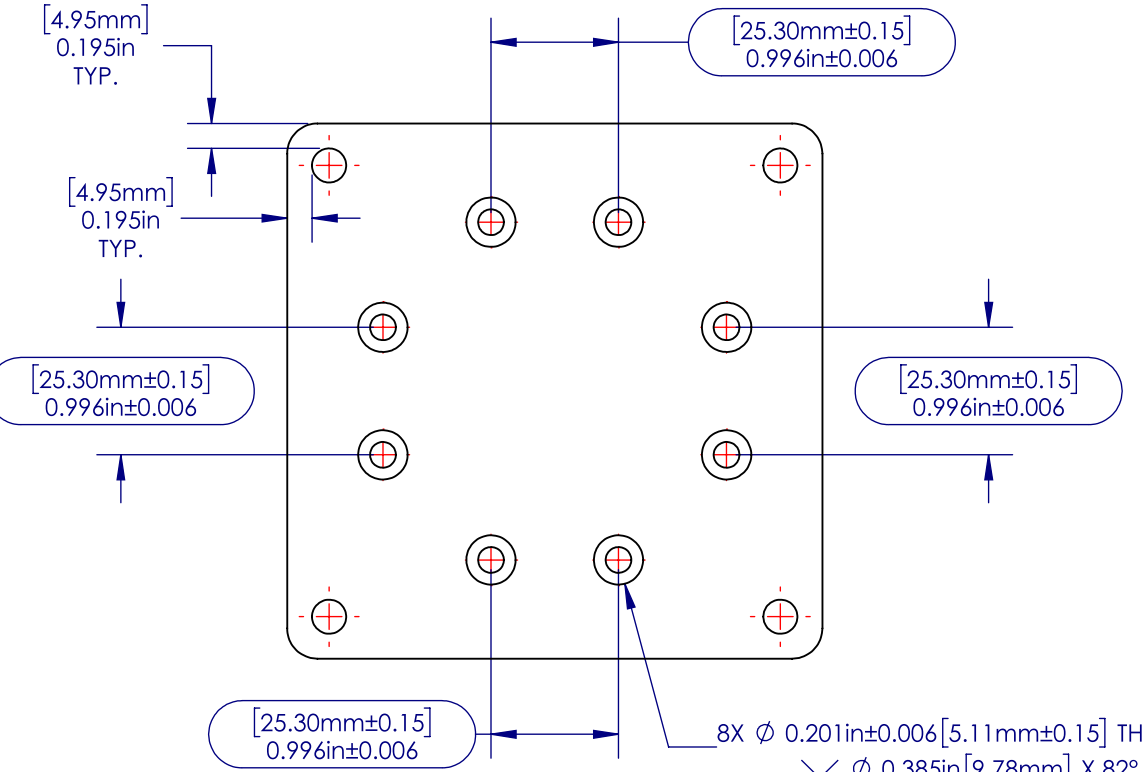


- NOTES:
1. REFER TO CAD FILE FOR TOOLING
  2. ALL RADII & FILLET RADIUS TO BE R0.236" [6.00mm] UNLESS OTHERWISE SPECIFIED
  3. SECTIONAL MATERIAL THICKNESS 0.236" ± 0.008" [6.00mm ± 0.20mm] UNLESS OTHERWISE SPECIFIED
  4. CRITICAL DIMENSIONS ARE SHOWN WITHIN ( )
  5. REFERENCE DIMENSIONS ARE SHOWN WITHIN ( )
  6. ALL DIMENSIONS ARE FINISHED PART DIMENSIONS
  7. REMOVE ALL SHARP EDGES AND BURRS
  8. SURFACE FINISH TO BE APPLIED ON ALL FACES AND EDGES
  9. SURFACE FINISH AS PER CUSTOMER'S PURCHASE ORDER
  10. ALL DIMENSIONS AND TOLERANCES ARE TO BE INTERPRETED ACCORDING TO ASME Y14.



SECTION A-A

SECTION B-B



PROPRIETARY AND CONFIDENTIAL  
 THE INFORMATION CONTAINED IN THIS DRAWING IS THE SOLE PROPERTY OF ALWOOD LLC. ANY REPRODUCTION IN PART OR AS A WHOLE WITHOUT THE WRITTEN PERMISSION OF ALWOOD LLC IS PROHIBITED.

UNLESS OTHERWISE SPECIFIED: DIMENSIONS ARE IN INCHES [MM] TOLERANCES:		NAME	DATE
MILLIMETERS	INCHES	EASS	07/03/20
X = ±1	[.X = ± 0.1]	DRAWN	
.X = ±.25	[.XX = ± 0.01]	CHECKED	
.XX = ±10	[.XXX = ± 0.005]	ENG APPR.	
ANGLES	∠ = ± 1°	MFG APPR.	
FRACTIONS	X/X = ± 1/64	Q.A.	
INTERPRET GEOMETRIC TOLERANCING PER:		COMMENTS:	
MATERIAL	5052-H32		
FINISH	Powder Coat		
NEXT ASSY	USED ON		
APPLICATION	DO NOT SCALE DRAWING		



TITLE: <b>3 Way Post Base</b>		
SIZE <b>B</b>	PART NO. LFPOSTBASE	REV <b>A</b>
SCALE: 1:1.5 WEIGHT: 0.381		SHEET 2 OF 2

4

3

2

1