



LEVANTÉ®  
ALUMINUM ARCHITECTURAL COMPONENTS

# FENCING INSTALLATION GUIDELINES



*These guidelines presume the installer has a working knowledge of fence installation and the tools required. It is suggested to view installation video prior to starting installation.*

## INSTALLATION TOOLS CHECKLIST:

- ☐ Levanté® Aluminum Standard Boards, Fence Posts, and Accessories
- ☐ Proper fasteners
- ☐ Miter saw with high tooth (*minimum 80*) count non-ferrous blade
- ☐ Tape measure and standard construction level
- ☐ Safety equipment (*glasses, ear protection, etc.*)
- ☐ Rubber mallet

## HAVE QUESTIONS?

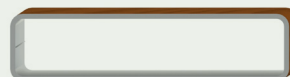
Levanté® Quick Tech Support is available Monday-Friday. Our trained support team can consult on your project and provide installation techniques, verify material usage for application, and provide general guidance on working with Levanté®. Contact us at [quicktech@levantealuminum.com](mailto:quicktech@levantealuminum.com) for support.

# PRODUCT DESCRIPTIONS & DIMENSIONS

## BOARDS

All standard boards are approximately 19' in length. Standard board width sizes include 2", 4", and 6".

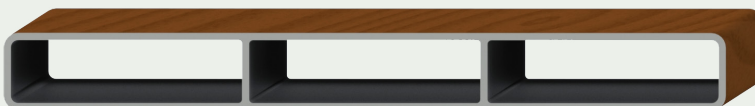
50 MM (2") STANDARD BOARD



100 MM (4") STANDARD BOARD



150 MM (6") STANDARD BOARD



## POST AND TRIM COMPONENTS

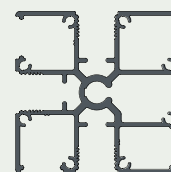
### Fence Posts

Fence Posts come in two options: 3-Way Fence Post in a 10' length or 1-Way Fence Post in a 19' length. 1-Way Post can also be used for top rail and/or gate construction.

1-WAY POST



3-WAY POST



### Finishing Concealer

Finishing Concealer comes in 19' length. Finishing Concealers are to be installed to cover screw channel once screws have been installed to secure boards to Fence Posts. Finishing Concealers can also be installed in between boards when spacing between boards is desired.

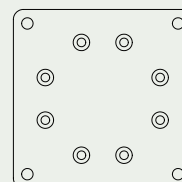
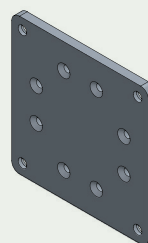
FINISHING CONCEALER



### Fence Post Base

Used when attaching a Fence Post to concrete or asphalt.

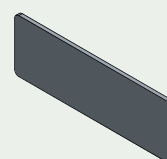
3-WAY POST BASE - 4" X 4" X 1/4"



### Fence Post Caps

Can be adhered to the top of the Fence Post with cyanoacrylate glue, polyurethane construction adhesive, or epoxy. Other 3" standard post caps can be used if desired.

1-WAY POST CAP  
3"X 1"X 1/16"



3-WAY POST CAP  
3"X 3" X 1/16"



## GETTING STARTED

### FASTENERS:

Use 1-¼" #10 self-drilling corrosion-resistant exterior hex-head screw. Choose a fastener material fit for use and climate. Attach Levanté® base plates to fence post using 1" #10 corrosion-resistant exterior tapered-head screw.

### CUTTING:

Miter saw with minimum 80 tooth non-ferrous metal-cutting blade. Proper protection equipment should be used.

### MATERIAL VARIATION:

It is suggested to lay out several boards at a time to look for material variation. Avoid installing similar material consecutively. If similar material cannot be avoided, staggering or flipping the board can be helpful.

## POST INSTALLATION

**These guidelines do not supersede any local code regulations.**

Review area where Levanté® Fencing is to be installed, checking for proper post layout.

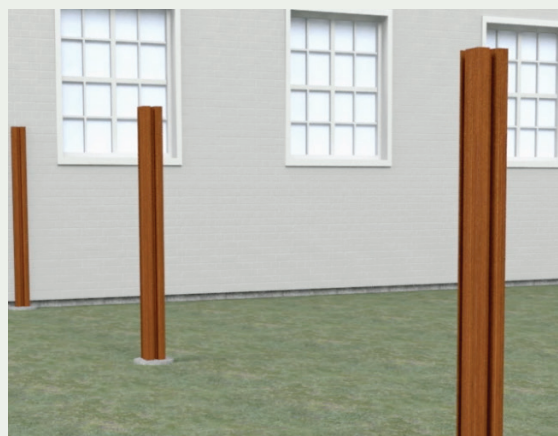
**1** Inspect all material once delivered prior to installation to ensure no damage or defects.

**2** 1-way or 3-way posts can be used at fence starting or ending points. Three-way posts should be used for corners and straight runs. We recommend installing posts no longer than 8' apart.

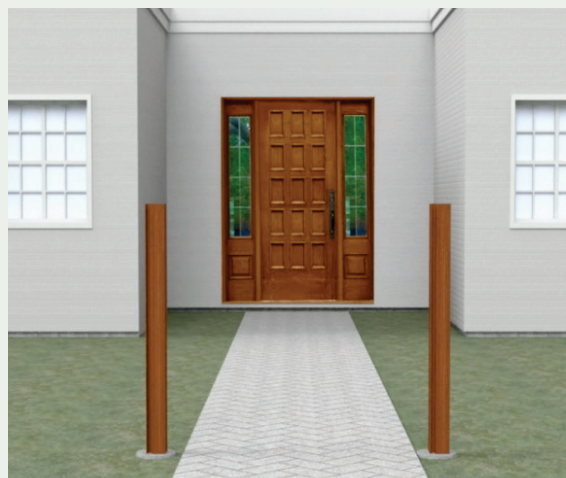


CONTINUED

- 3** Install posts in concrete footing below grade per local code. If installing on concrete or asphalt, install Levanté® base plates onto posts and then use appropriate lag bolts to fasten into concrete/asphalt.



- 4** Take careful consideration when installing posts that will connect to gates to ensure proper placement of post for gate hinge and latch installation.





# STANDARD BOARD HORIZONTAL FENCE INSTALLATION

**1** Cut Levanté® standard boards to size.

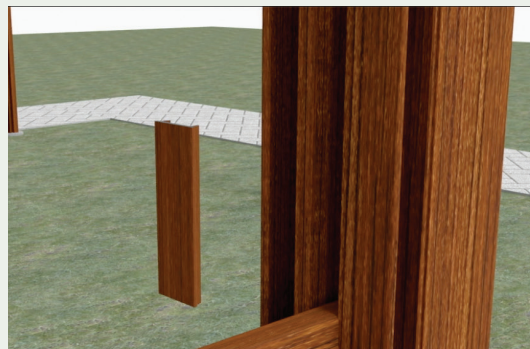
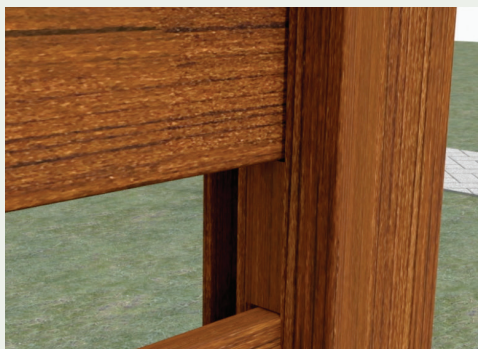
**2** Slide board into post channel. Make sure to move board to lowest height desired.



**3** Fasten board to post by using a minimum of 2 screws on each end of board through screw channel.



**4** If spacing the boards is desired, cut Finishing Concealer to size. Add Finishing Concealer to spaces as you work your way up the fence.



CONTINUED

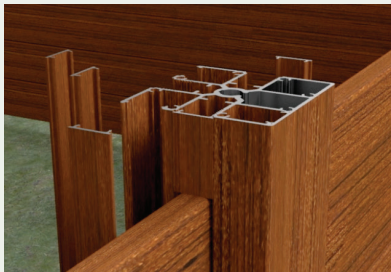
- 5** Continue to slide boards into channel working from the bottom up and fasten until fence is at desired height.



- 6** Vary board spacing and widths to achieve different designs.



- 7** Cut and insert Finishing Concealer into open channels on posts.



- 8** Install post caps.



# GATE CONSTRUCTION USING STANDARD BOARDS AND 1-WAY POST

**1** Miter 1-Way Post ends to align corners. 1-Way Posts to be used as perimeter (4 sides) of gate.

**2** Cut Levanté® standard boards to size.

**3** Slide board into post channel on side posts of gate. Starting board to be installed so that roughly  $\frac{3}{4}$ " of the board extends above the inside corner of the side posts. End post to slide onto  $\frac{3}{4}$ " of board extended past inside corner of post so that mitered corners align.



**4** Fasten board to side posts by using a minimum of 2 screws on each end of board through screw channel. Fasten board to end post using a maximum screw spacing of 12".



**5** If spacing the boards is desired, cut Finishing Concealer to size. Add Finishing Concealer to spaces as you work your way up the gate.

**6** Continue to slide boards into channel working from the bottom up and fasten until fence is at desired height.  $\frac{3}{4}$ " of last board required to extend past inside corner of side posts.



**7** End post to slide onto  $\frac{3}{4}$ " of board extended past inside corners so mitered corners align.

**8** Cut and insert Finishing Concealer into open channels on 1-Way Posts.



## REGISTER YOUR LEVANTÉ® FENCE:

*Please register your Levanté® product within 45 days of installation.*

[www.levantealuminum.com/warranty/](http://www.levantealuminum.com/warranty/)

## VIEW THE LEVANTÉ® FENCE INSTALLATION VIDEO:

<https://levantealuminum.com/product/architectural-aluminum-applications/>

**QUESTIONS?** Call your local Levanté® Installation Specialist at 800.642.2246.



DA22-0037 ©2022 Hallmark Building Supplies, Inc. is a Marketer & Distributor of Levanté® Aluminum Architectural Components.

Version 09.2022