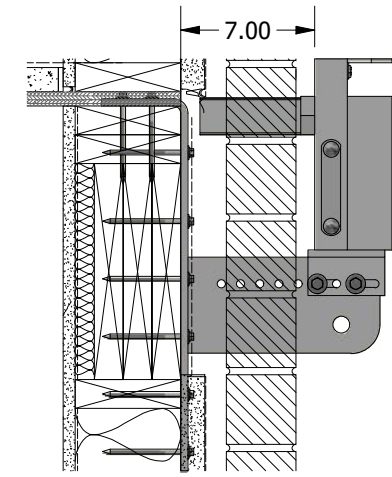
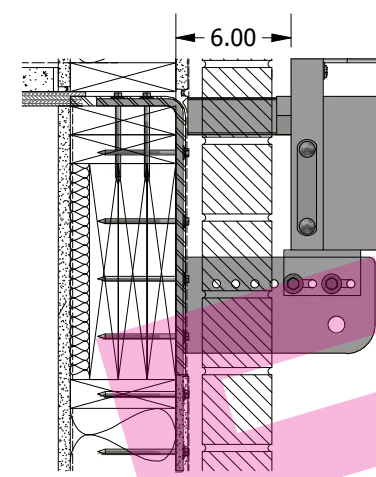
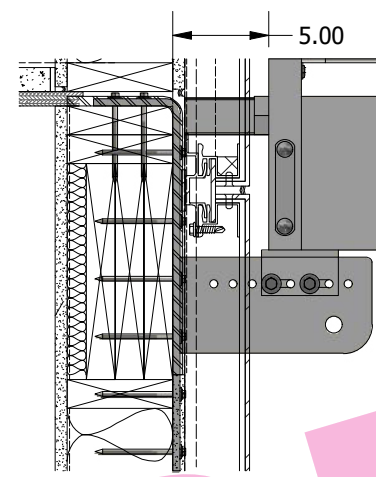
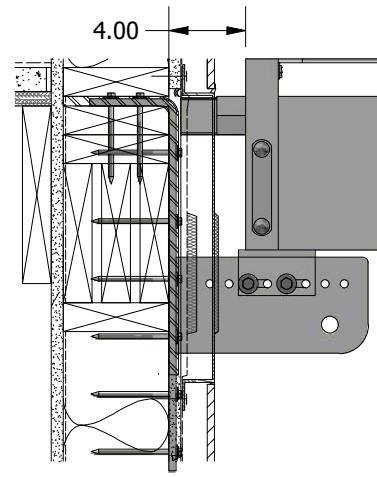
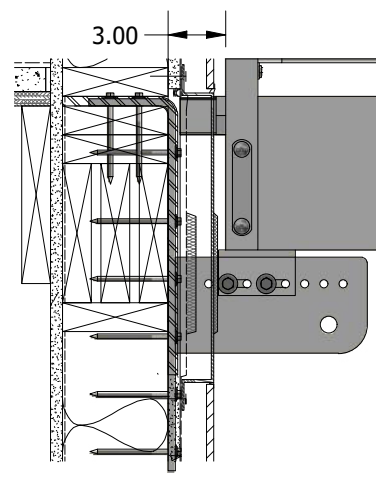
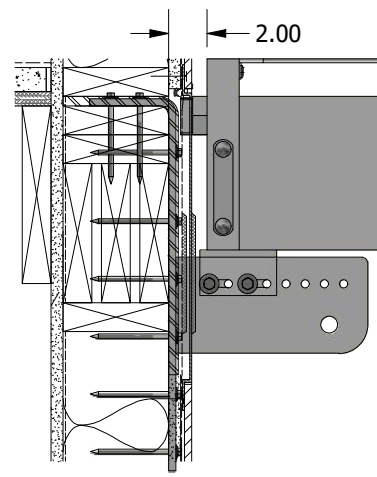


- NOTES:
- (DIM) = FIELD VERIFY BY OTHERS
 - SEE ENGINEERING FOR KNIFE PLATE DETAILS
 - SEE ENGINEERING FOR SEAT PLATE DETAILS

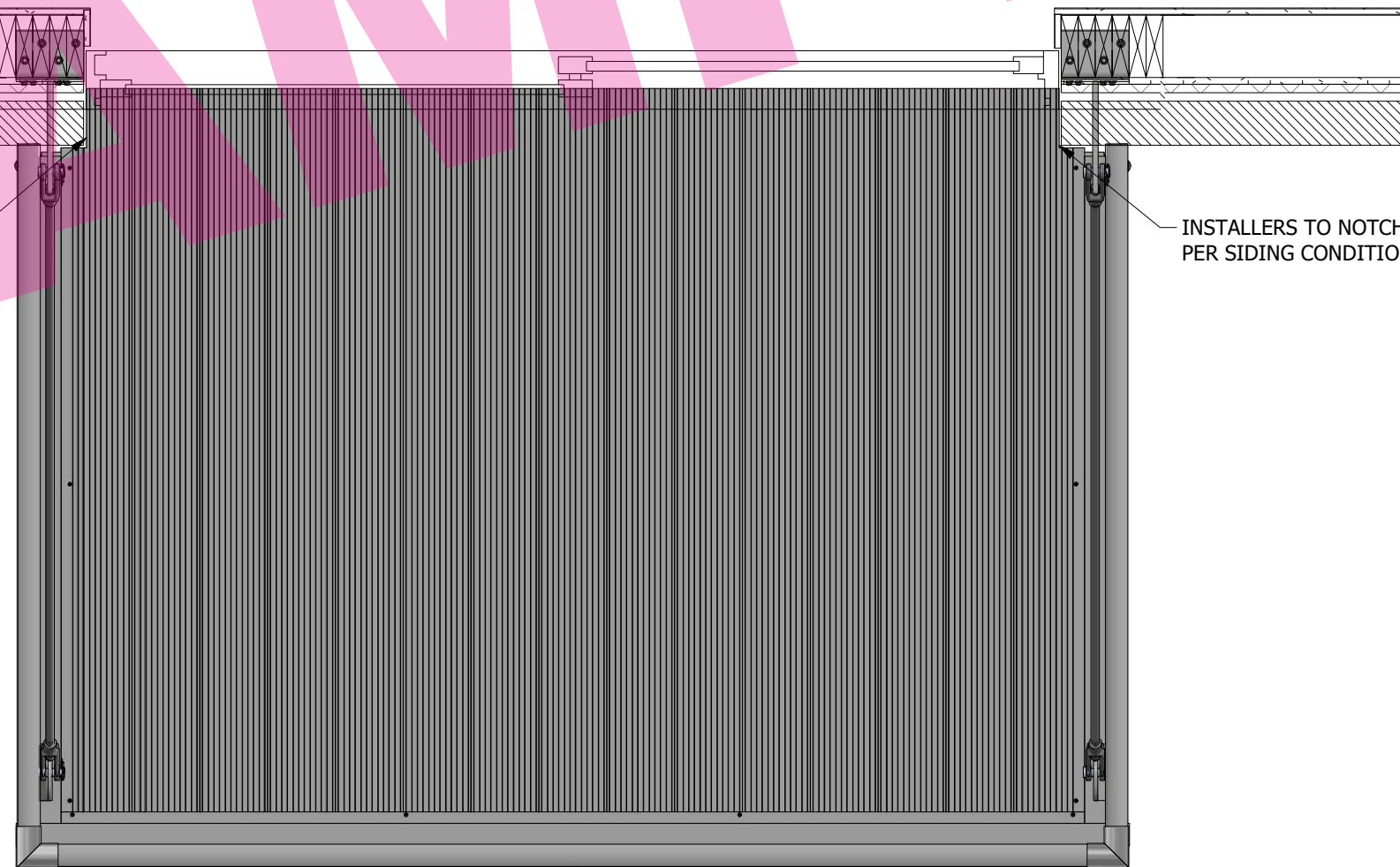
PROJECT NUMBER:	XXX	
CUSTOMER NAME:	X	
PROJECT NAME:	X	
<small>PROPRIETARY AND CONFIDENTIAL: THE INFORMATION CONTAINED IN THIS DRAWING IS THE SOLE PROPERTY OF LEVANTE ARCHITECTURAL ALUMINUM. ANY REPRODUCTION WITHOUT THE WRITTEN CONSENT OF LEVANTE ARCHITECTURAL ALUMINUM IS PROHIBITED.</small>		
DRAWN BY:	DG	
LAST PRINTED DATE:		
REV	SUBMITTAL LOG	DATE
QTY:	X	
UB.01-INS-ASM		



LOCATE ADJUSTABLE PLATE TO MATCH SIDING CONDITION
RAIL POST TO SIDING NOT TO EXCEED 3.5"

INSTALLERS TO NOTCH DECKING
PER SIDING CONDITION SIM. AS SHOWN

INSTALLERS TO NOTCH DECKING
PER SIDING CONDITION SIM. AS SHOWN



PROJECT NUMBER: XXX

CUSTOMER NAME: X

PROJECT NAME: X

PROPRIETARY AND CONFIDENTIAL: THE INFORMATION CONTAINED IN THIS DRAWING IS THE SOLE PROPERTY OF LEVANTE ARCHITECTURAL ALUMINUM. ANY REPRODUCTION WITHOUT THE WRITTEN CONSENT OF LEVANTE ARCHITECTURAL ALUMINUM IS PROHIBITED.

DRAWN BY: DG

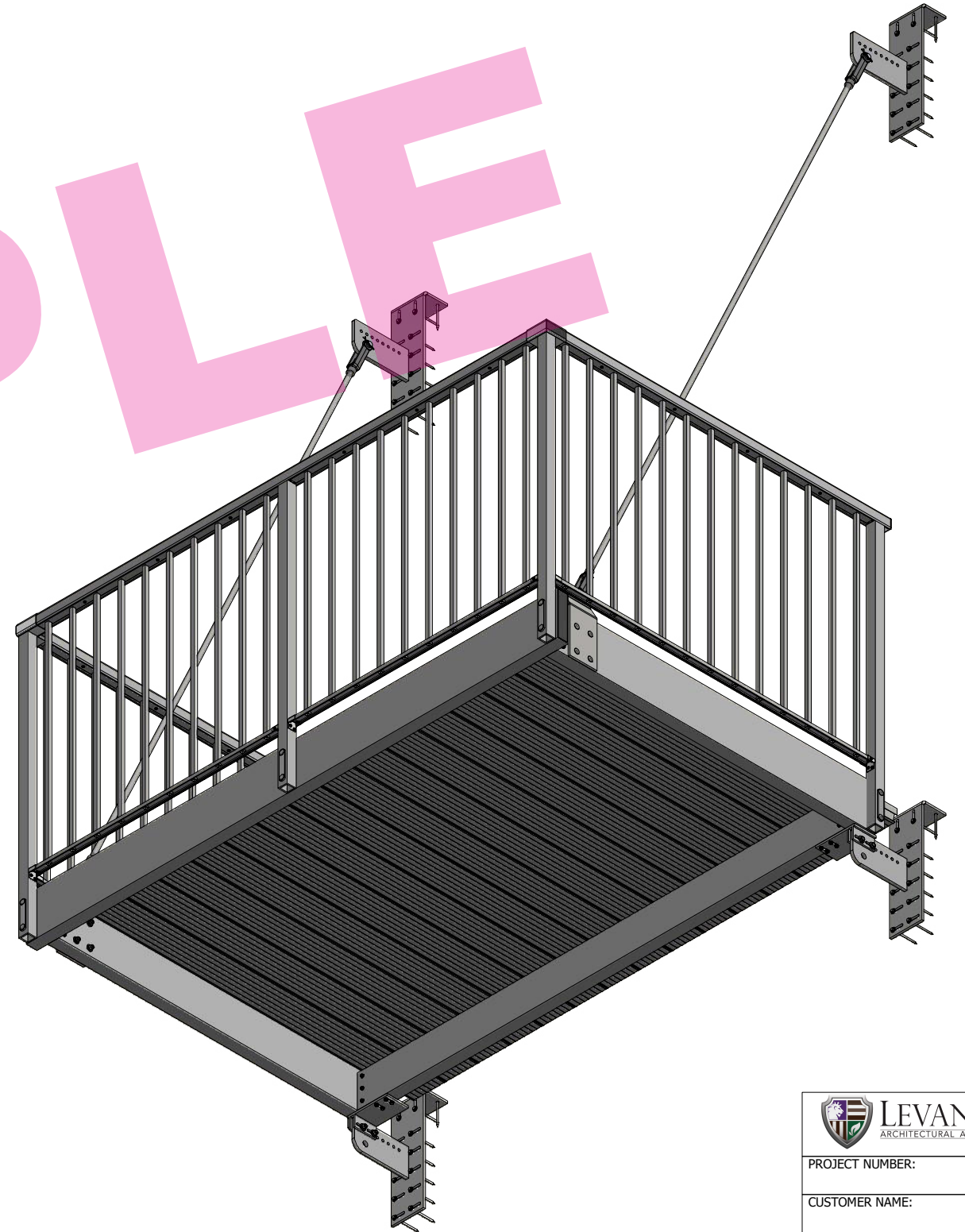
LAST PRINTED DATE:

REV	SUBMITTAL LOG	DATE

QTY: X

UB.01-INS-ASM

PARTS LIST		
ITEM QTY	PART NUMBER	DESCRIPTION
8	10-103-00	TEK #14X 1.25"
2	118.5in Tie Rod	
5	100104	Post Washer Plate
4	100704	Clevis Yoke, Pin, Ring Assm 3/4in
2	100705	Clevis Plate Offset .375 x 5
4	Bolt Assembly Hex .375 x 1.75in	
8	Carriage 3-8 x 3in Assem	
9	Carriage 3-8 x 4.5in Assem	
1	Carriage 3-8 x 6in Assem	
1	SP-L	Seat Pad - Left
1	SP-R	Seat Pad - Right
1	UB.01	
2	UB-INS.5 RETURN	
1	UB-INS.8 FRONT	
4	UP-002	



PROJECT NUMBER: XXX

CUSTOMER NAME: X

PROJECT NAME: X

PROPRIETARY AND CONFIDENTIAL: THE INFORMATION CONTAINED IN THIS DRAWING IS THE SOLE PROPERTY OF LEVANTÉ ARCHITECTURAL ALUMINUM. ANY REPRODUCTION WITHOUT THE WRITTEN CONSENT OF LEVANTÉ ARCHITECTURAL ALUMINUM IS PROHIBITED.

DRAWN BY: DG

LAST PRINTED DATE:

REV	SUBMITTAL LOG	DATE

QTY: X

UB.01-INS-ASM