



These guidelines presume the installer has a working knowledge of cladding/siding installation and the tools required. It is suggested to view installation video prior to starting installation.

INSTALLATION TOOLS CHECKLIST:

- Levanté[®] Aluminum boards and accessories
- Proper fasteners
- Miter saw with high tooth (*minimum 80*) count non-ferrous blade
- Circular saw with metal or aluminum blade
- Tape measure and standard construction level
- Safety equipment (*glasses, ear protection, etc.*)
- Rubber mallet

HAVE QUESTIONS?

Levanté[®] Quick Tech Support is available Monday-Friday. Our trained support team can consult on your project and provide installation techniques, verify material usage for application, and provide general guidance on working with Levanté[®]. Contact us at quicktech@levantealuminum.com for support.

PRODUCT DESCRIPTIONS & DIMENSIONS

BOARDS



Interlocking Boards: Available in 4" and 6" widths

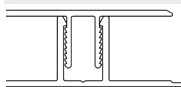
100MM (4") INTERLOCKING BOARD

150MM (6") INTERLOCKING BOARD

STARTER TRIM



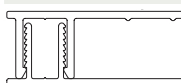
TRIM COMPONENTS



H-Trim: Front and Back

H-TRIM FRONT

H-TRIM BACK



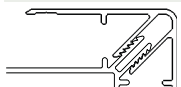
Door & Window Trim: Front and Back

DOOR & WINDOW TRIM FRONT

DOOR & WINDOW TRIM BACK



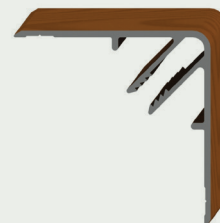
Can be used around openings and/or along finished edge of cladding/siding to conceal fasteners and create picture frame design.



Inside Corner and Outside Corner

INSIDE CORNER

OUTSIDE CORNER



Finishing Angle



GETTING STARTED

FASTENERS:

Select an appropriate length #8 self-tapping corrosion-resistant exterior pan-head or truss-head screw. Fasteners must penetrate framing a minimum of 1". Choose a fastener material fit for use and climate.

CUTTING:

Miter saw use minimum 80 tooth non-ferrous metal-cutting blade. Circular saw can be used with aluminum or metal blades, 7-1/4" minimum 56 tooth count or 6-1/2" minimum 32 tooth count. Proper protection equipment should be used.

MATERIAL VARIATION:

It is suggested to lay out several boards at a time to look for material variation. Avoid installing similar material consecutively. If similar material cannot be avoided, staggering the pattern along the wall can be helpful.

FRAMING/ WALL CONSTRUCTION:

These guidelines do not supersede any local code regulations.

Framing should be a maximum of 16" on center. Levanté® sheds water but is not waterproof, a water barrier system such as DuPont™ Tyvek® should be properly installed as part of the wall system.

HORIZONTAL CLADDING INSTALLATION

- 1** Inspect all material once delivered prior to installation to ensure no damage or defects.
- 2** Review area where Levanté® is to be installed checking for proper framing and noting product layout and accessory use.
 - a. Fasteners should be installed through the sheathing and into the framing a minimum of 1".
- 3** When installing any Levanté® products pre-drill holes 1/8" larger than screw to allow for expansion and contraction of the material. Levanté® may expand or contract up to 3/16" in 19 ft boards with change in temperature. H-Trim can be used at butt joints to allow for movement.
 - a. For aesthetic purposes, exposed joints can be painted with exterior grade paint.

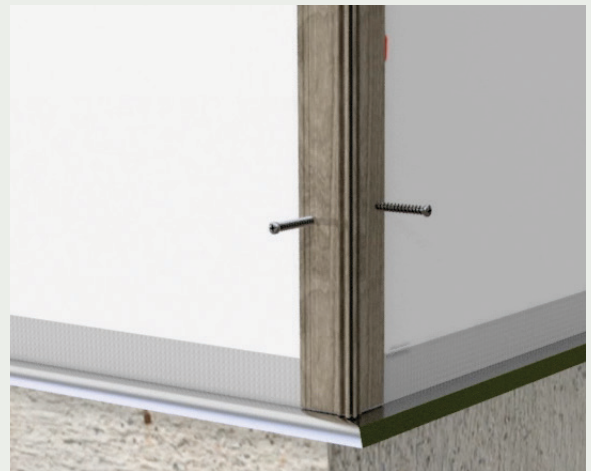
CONTINUED

- 4** Install Door and Window Trim Back piece around openings to framing. Fasten with approved fasteners.



- 5** Install Corner Trim Back to framing. Fasten with approved fasteners.

Make sure to stagger screws on either side of the corner so they do not conflict. It is recommended placing fastener $\frac{1}{4}$ " from the spine.



- 6** Install Door/Window Back Trim pieces at base of wall, when installing top down, and perimeter, as desired, to framing. It is recommended that Door/Window Trim butt to the Corner Back Trim. Fasten with approved fasteners.

- a. It is recommended to start at the top for better water management, however, material can be installed bottom to top at installers choice based on application. If installing bottom to top, Door and Window Back Trim would be installed at top of wall.



CONTINUED

7 Install required H-Trim Back to framing. Fasten with approved fasteners.

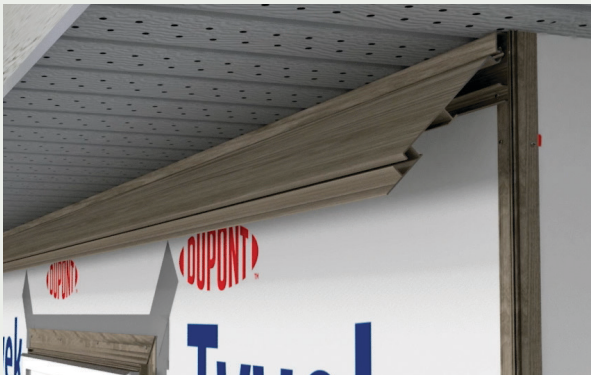
8 Install Starter Trim on structure and perpendicular to framing making sure to extend over previously installed trim piece flanges leaving $\frac{1}{2}$ " to $\frac{5}{8}$ " between starter edge and trim back spine. Fasten with approved fasteners.

- a. It is recommended to start at the top for better water management, however, material can be installed bottom to top at installers choice based on application.



9 Install Interlocking boards working away from Starter Trim.

- a. Make sure to cut boards $\frac{1}{2}$ " to $\frac{5}{8}$ " short on each end when using trim pieces to allow for expansion and contraction. Leave $\frac{1}{2}$ " to $\frac{5}{8}$ " on each end between board edge and trim spine.
- b. It is recommended that fasteners for trim backs do not conflict with Interlocking board legs.



CONTINUED

- 10** Install Door & Window Trim Front accessory pieces around openings by snapping the front sections into the back.



- 11** Install Corner Trim Front pieces by snapping the front sections into the back.



- 12** Install Door and Window Trim pieces around perimeter and base of wall by snapping the front section into the back.



- 13** Install H-Trim Front pieces by snapping the front sections into the back.

REGISTER YOUR LEVANTÉ® CLADDING:

Please register your Levanté® product within 45 days of installation.

www.levantealuminum.com/warranty/

VIEW THE LEVANTÉ® CLADDING INSTALLATION VIDEO:

<https://levantealuminum.com/product/architectural-aluminum-applications/>

QUESTIONS? Call your local Levanté® Installation Specialist at 800.642.2246.



DA23-0028 ©2023 Hallmark Building Supplies, Inc. is a Marketer & Distributor of Levanté® Aluminum Architectural Components.
Version 10.2023