

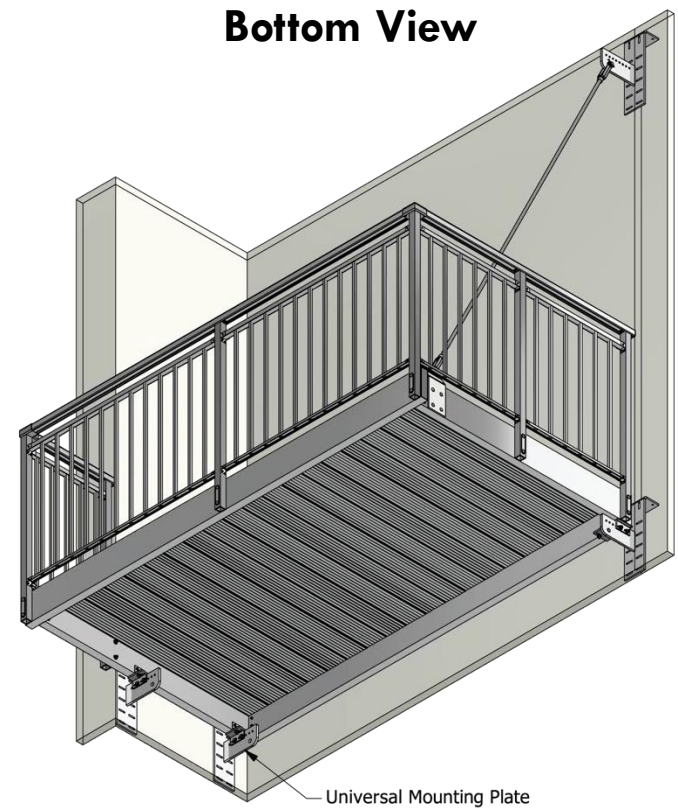
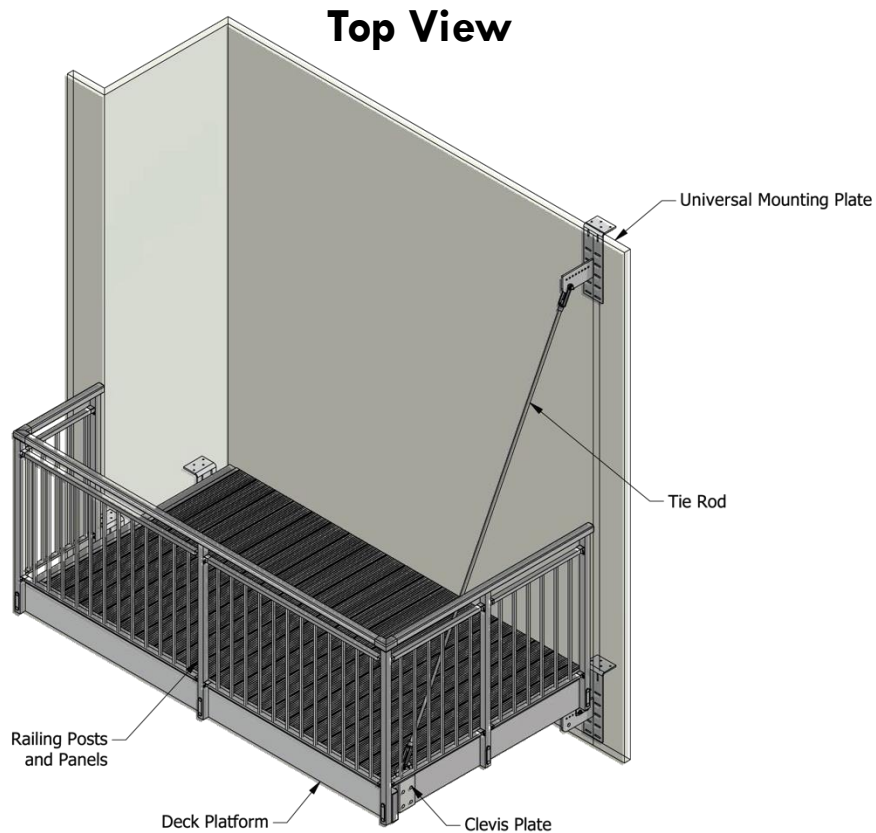


# General Balcony Installation



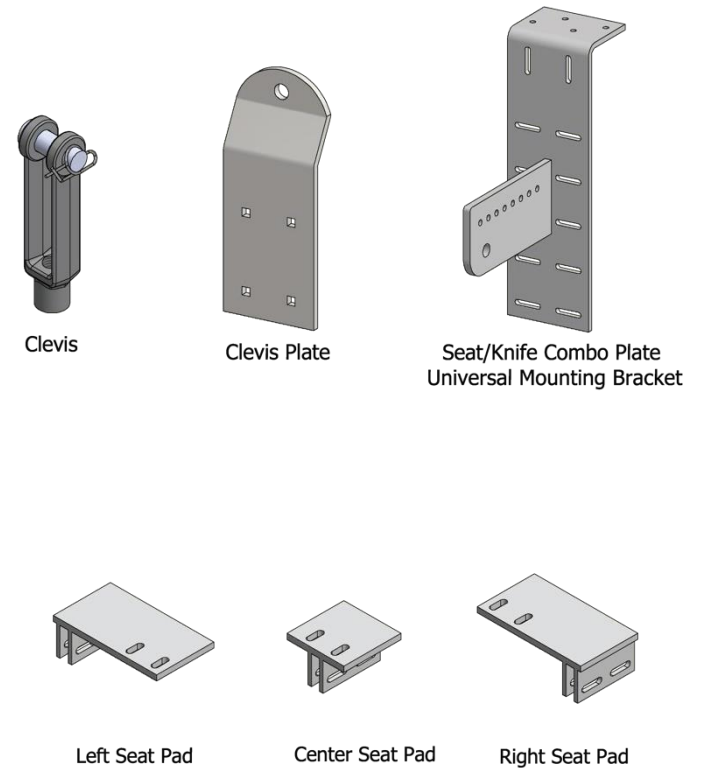
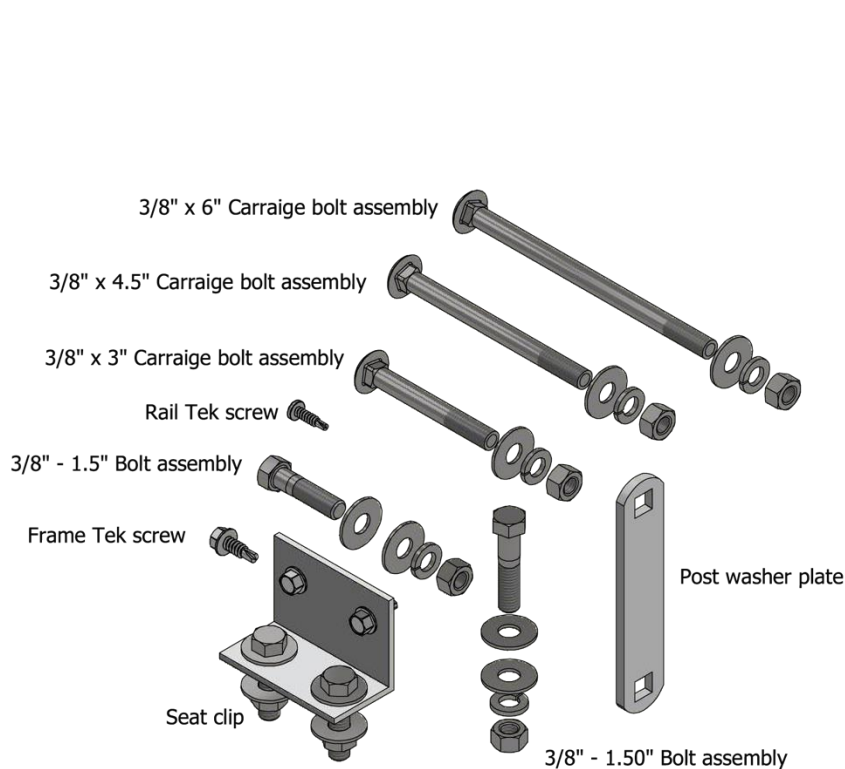
# Balcony Views

Balcony configuration, bracket designs and hardware can vary. Assembly order, installation method to be determined on site by GCs.

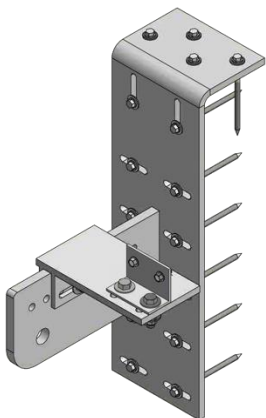


# Balcony Hardware

Typical hardware. Quantities and design(s) will vary.

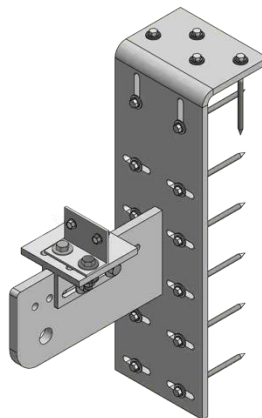


# Seat Plate Assemblies



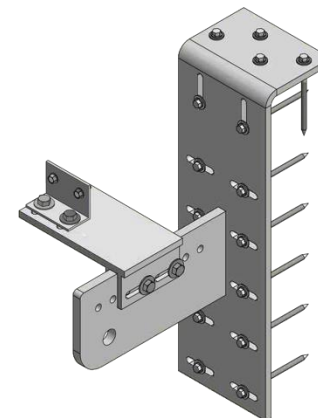
PARTS LIST		
ITEM QTY	PART NUMBER	DESCRIPTION
1	UP-002	Universal mounting plate, 16 SDS
1	SP-L	Seat Pad - Left
2	Bolt Assembly Hex .375 x 1.50in	
16	SDS25412	1/4 x 4.5" SDS Double Barrier Coating
16	Washer 1/4	Washer 1/4
1	2.875 seat clip assembly	

**Seat Plate - Left**



PARTS LIST		
ITEM QTY	PART NUMBER	DESCRIPTION
1	UP-002	Universal mounting plate, 16 SDS
1	SP-C	Seat Pad - Center
2	Bolt Assembly Hex .375 x 1.50in	
16	SDS25412	1/4 x 4.5" SDS Double Barrier Coating
16	Washer 1/4	Washer 1/4
1	2.875 seat clip assembly	

**Seat Plate - Center**

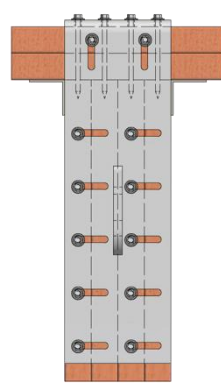


PARTS LIST		
ITEM QTY	PART NUMBER	DESCRIPTION
1	UP-002	Universal mounting plate, 16 SDS
1	SP-R	Seat Pad - Right
2	Bolt Assembly Hex .375 x 1.50in	
16	SDS25412	1/4 x 4.5" SDS Double Barrier Coating
16	Washer 1/4	Washer 1/4
1	2.875 seat clip assembly	

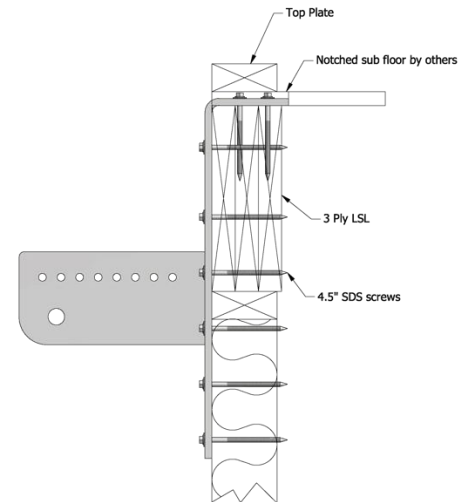
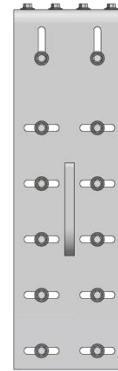
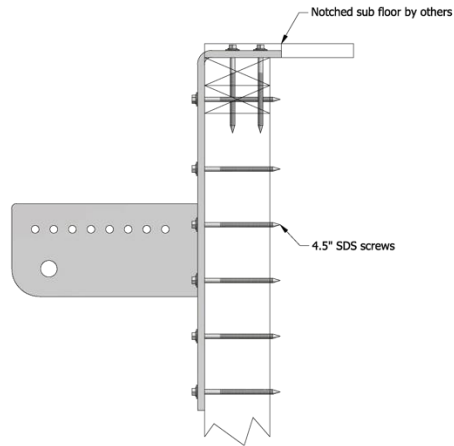
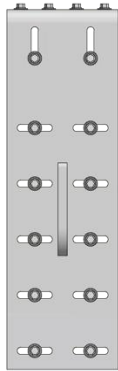
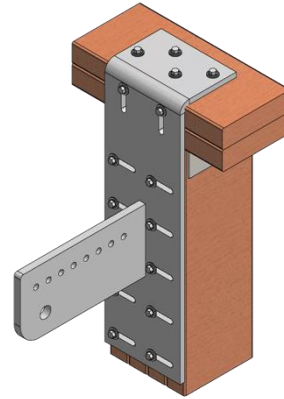
**Seat Plate - Right**

# Wall Plate Installation

Recommended plate installation methods. See unit specific balcony details, where supplied.

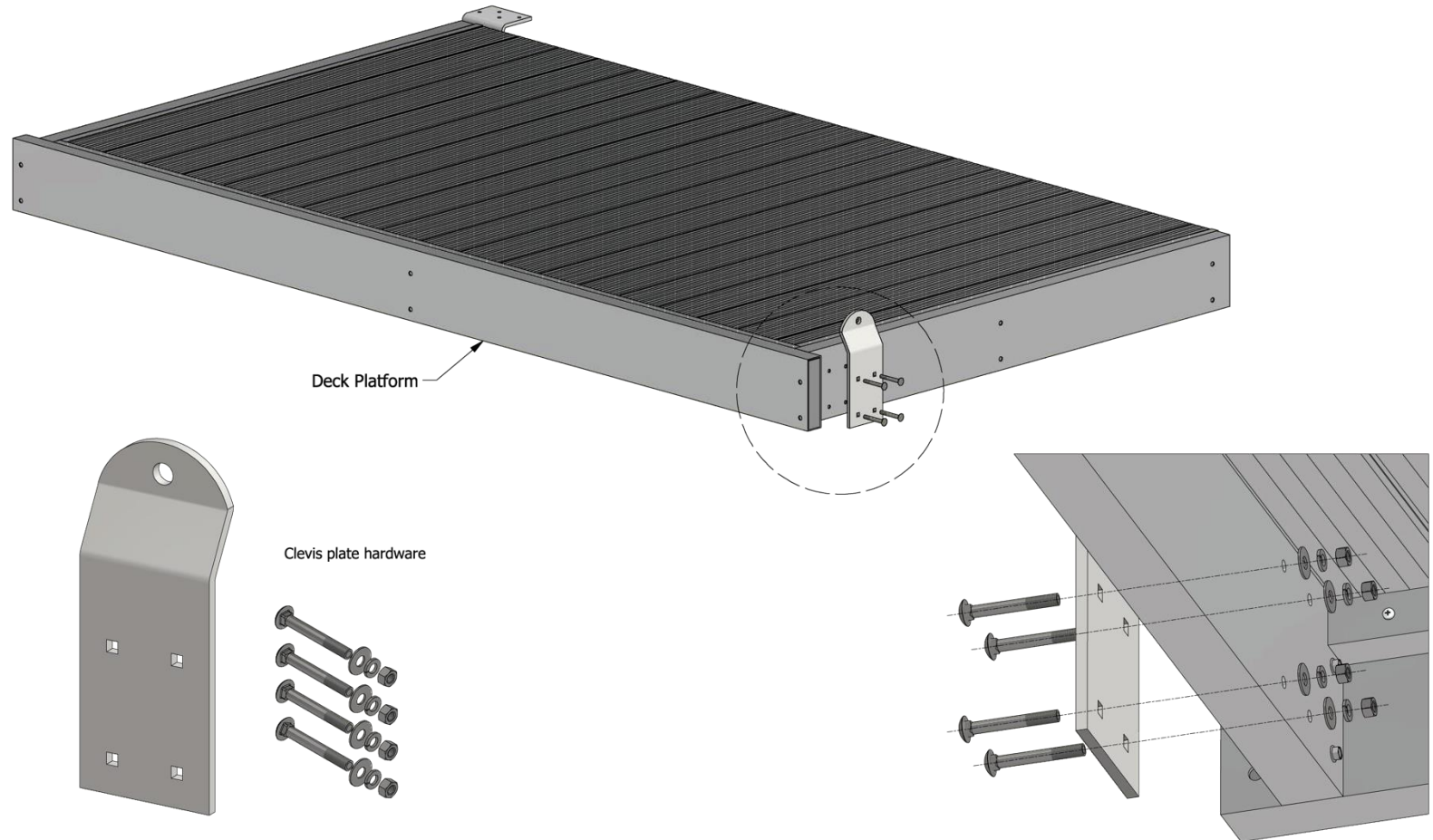


Center fasteners on studs



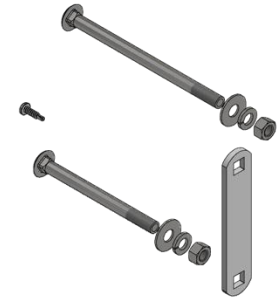
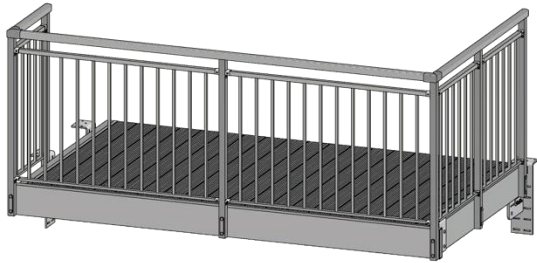
# Tie Rod Clevis Plate

Prior to balcony being hung, attach tie rod clevis plate(s).

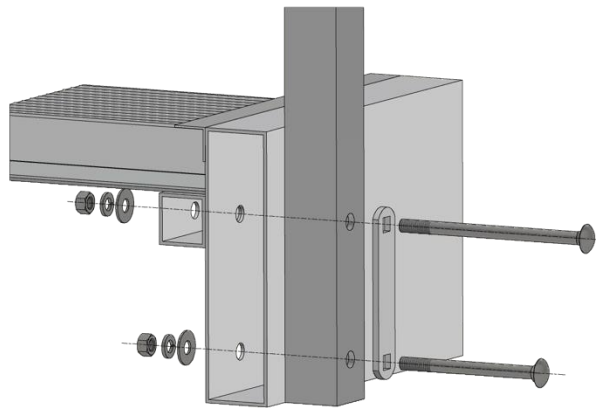


# Open Mid-Rail Panels

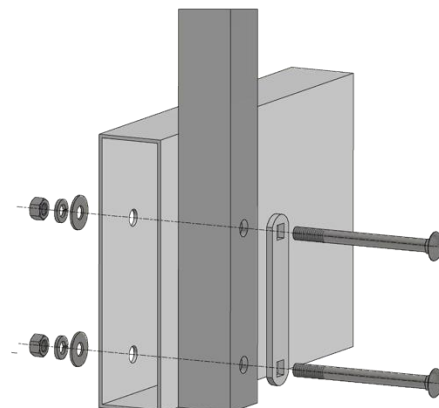
Prior to balcony being hung, attach guard rail panels.



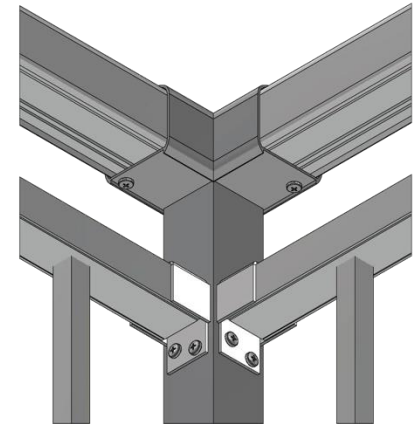
Panel and post hardware



Front post connection



Side post connection

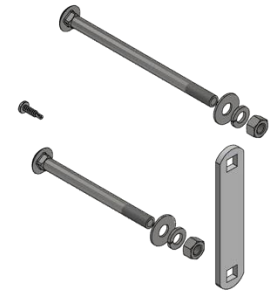
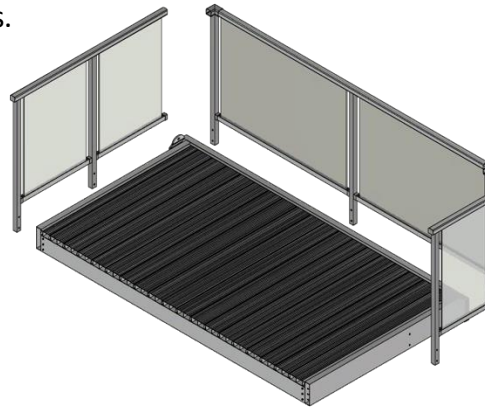
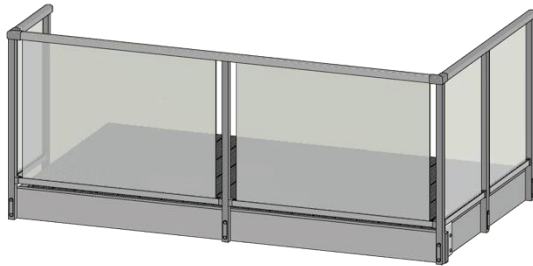


Top rail attachment

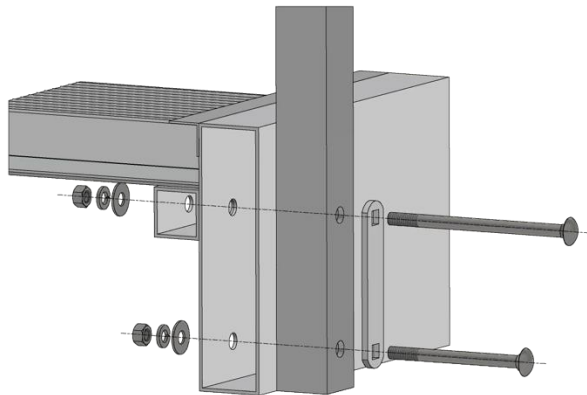


# Glass Panels

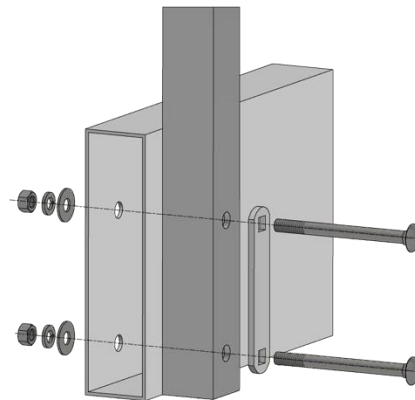
Prior to balcony being hung, attach guard rail panels.



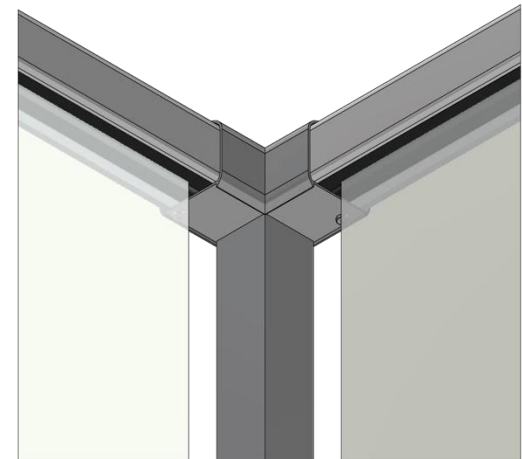
Panel and post hardware



Front post connection



Side post connection

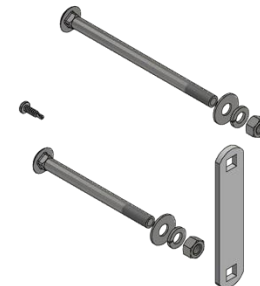
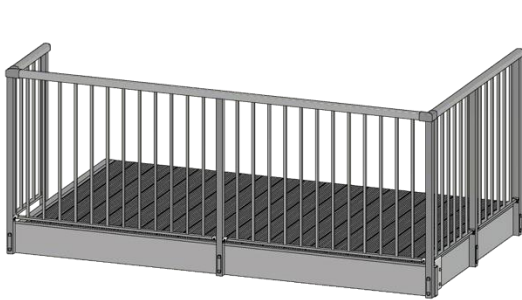


Top rail attachment

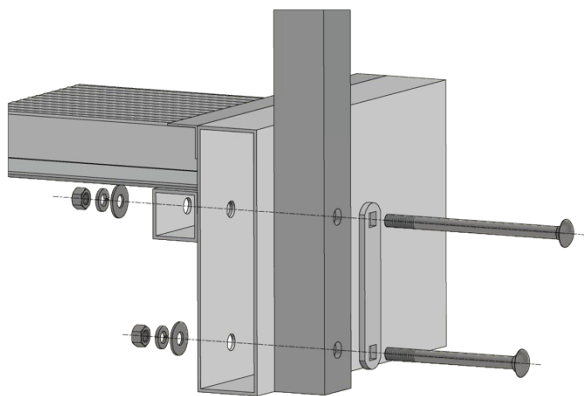


# Picket Insert Panels

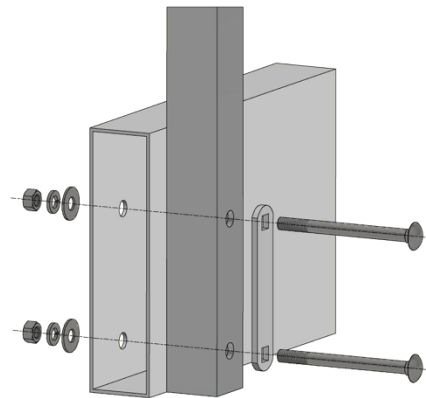
Prior to balcony being hung, attach guard rail panels.



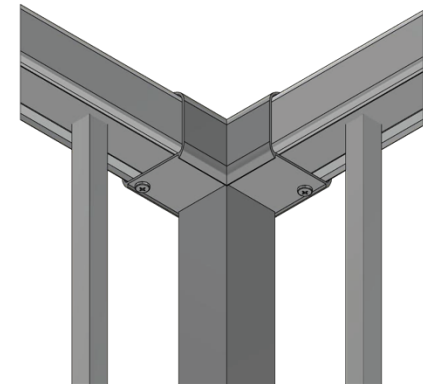
Panel and post hardware



Front post connection



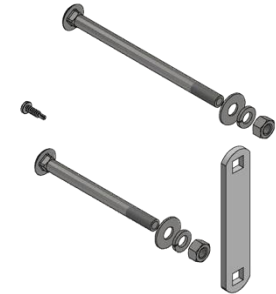
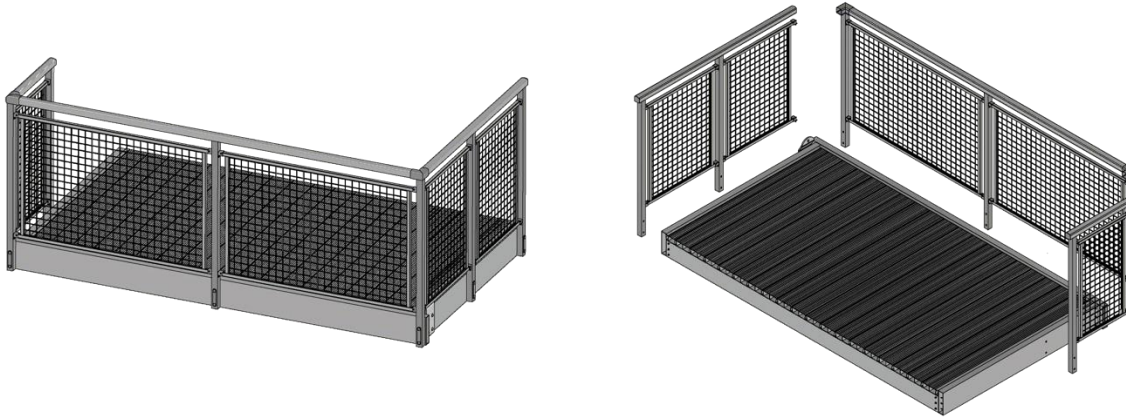
Side post connection



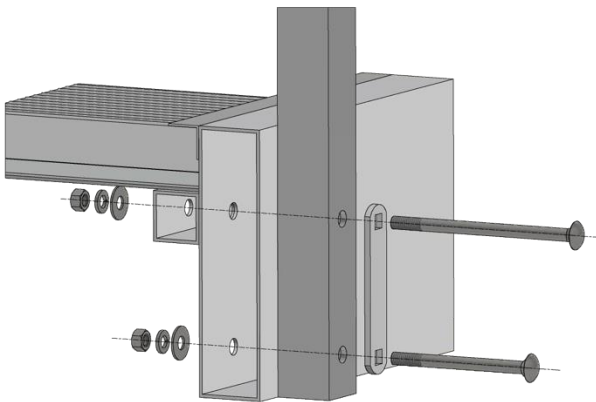
Top rail attachment

# Mesh Panels

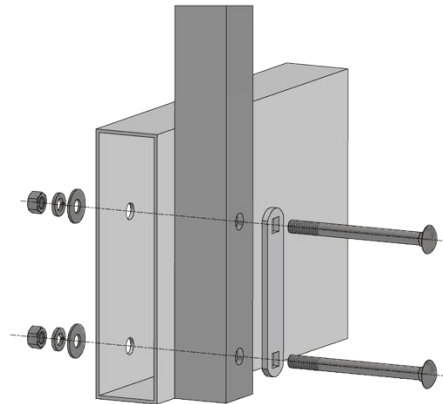
Prior to balcony being hung, attach guard rail panels.



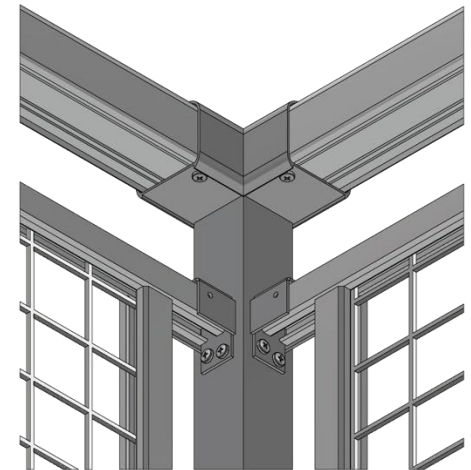
Panel and post hardware



Front post connection



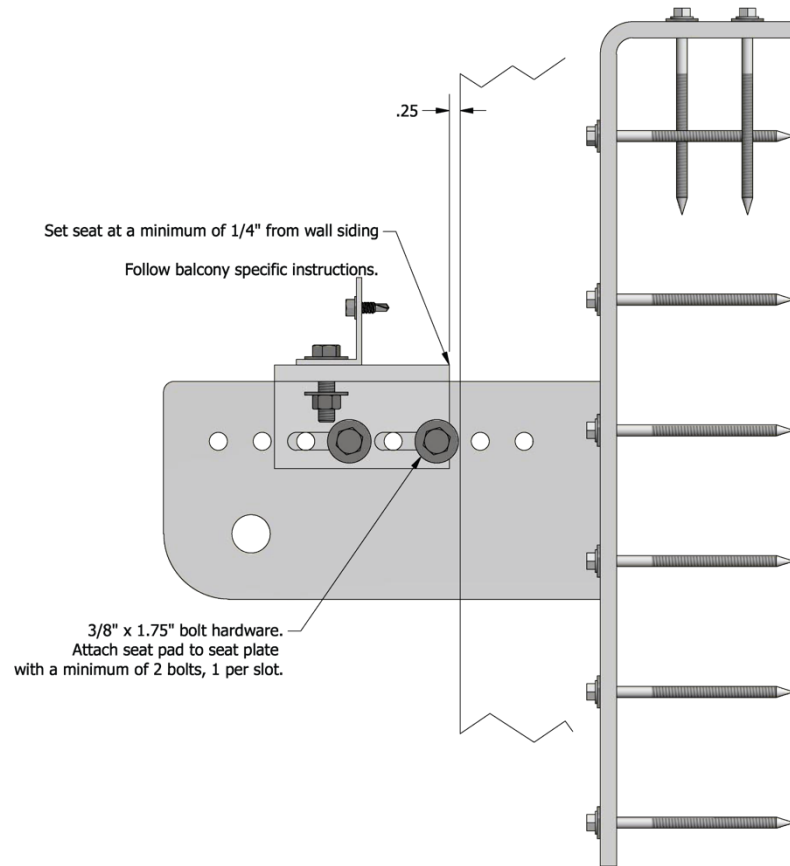
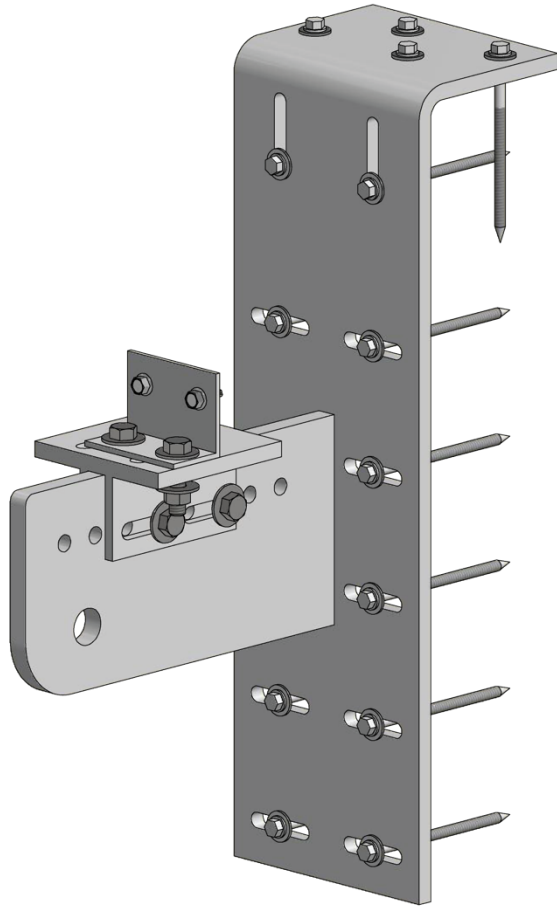
Side post connection



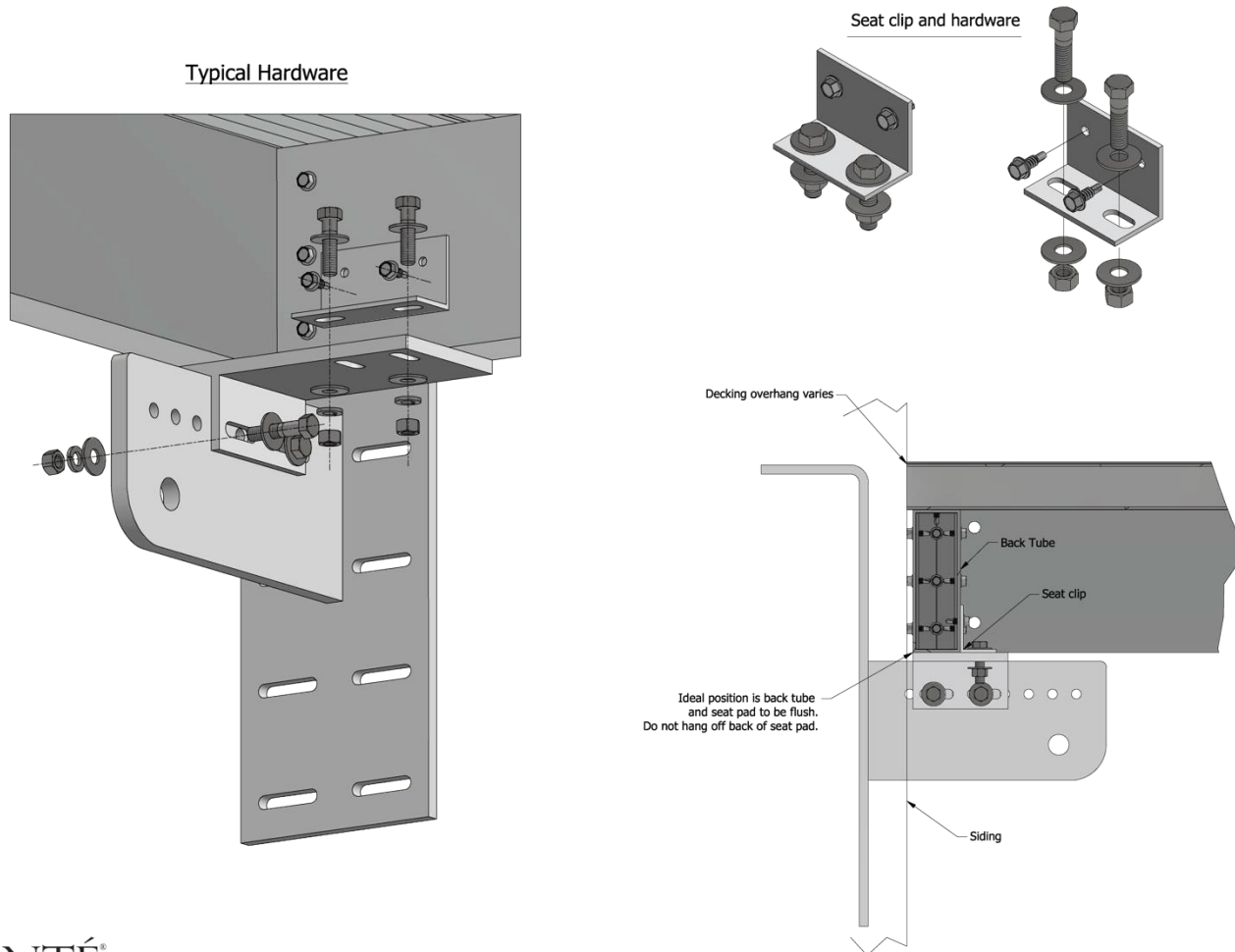
Top rail attachment

# Balcony Seat Installation

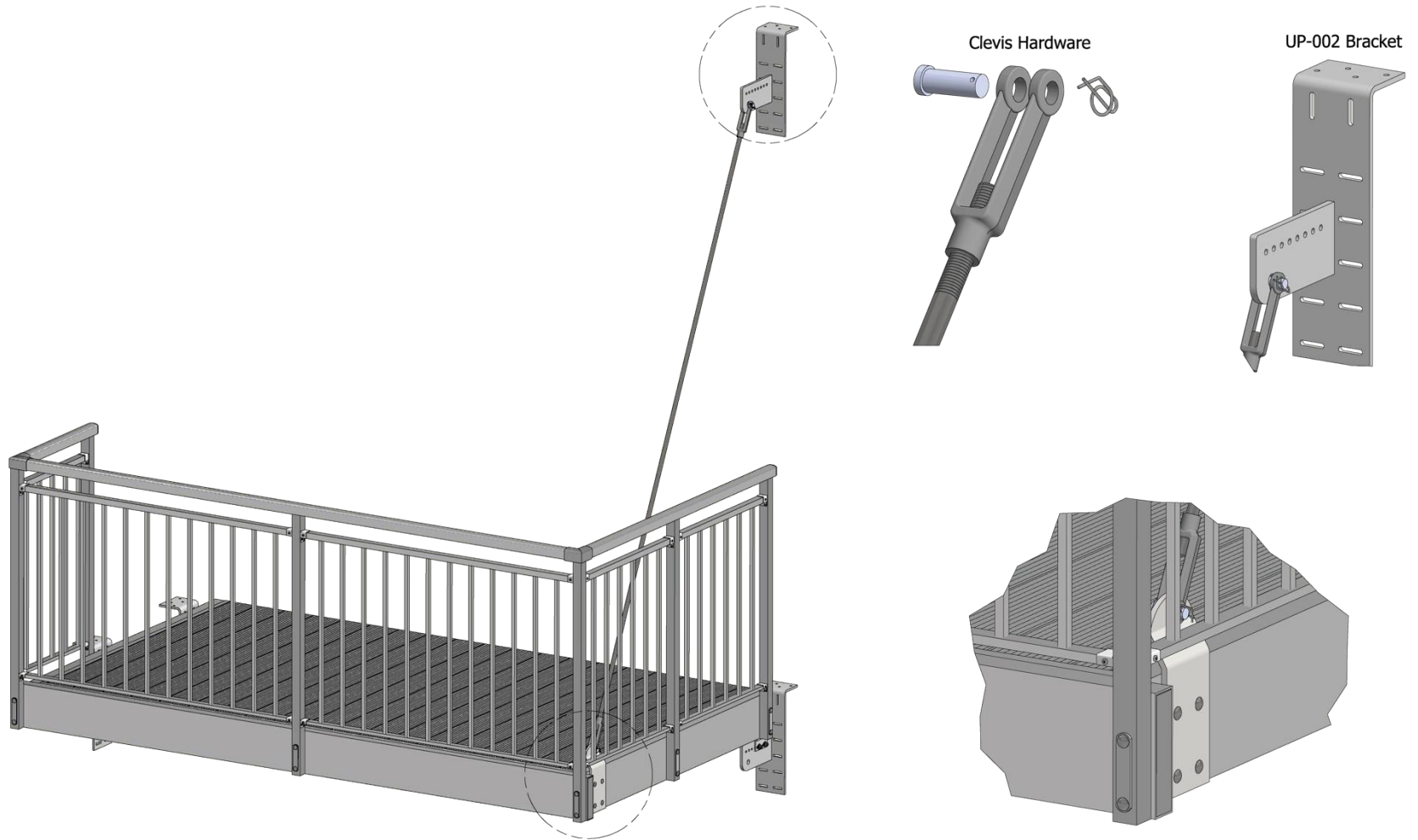
Attach seat plates to universal mounting plates prior to balcony install.



# Seat Pad and Clip



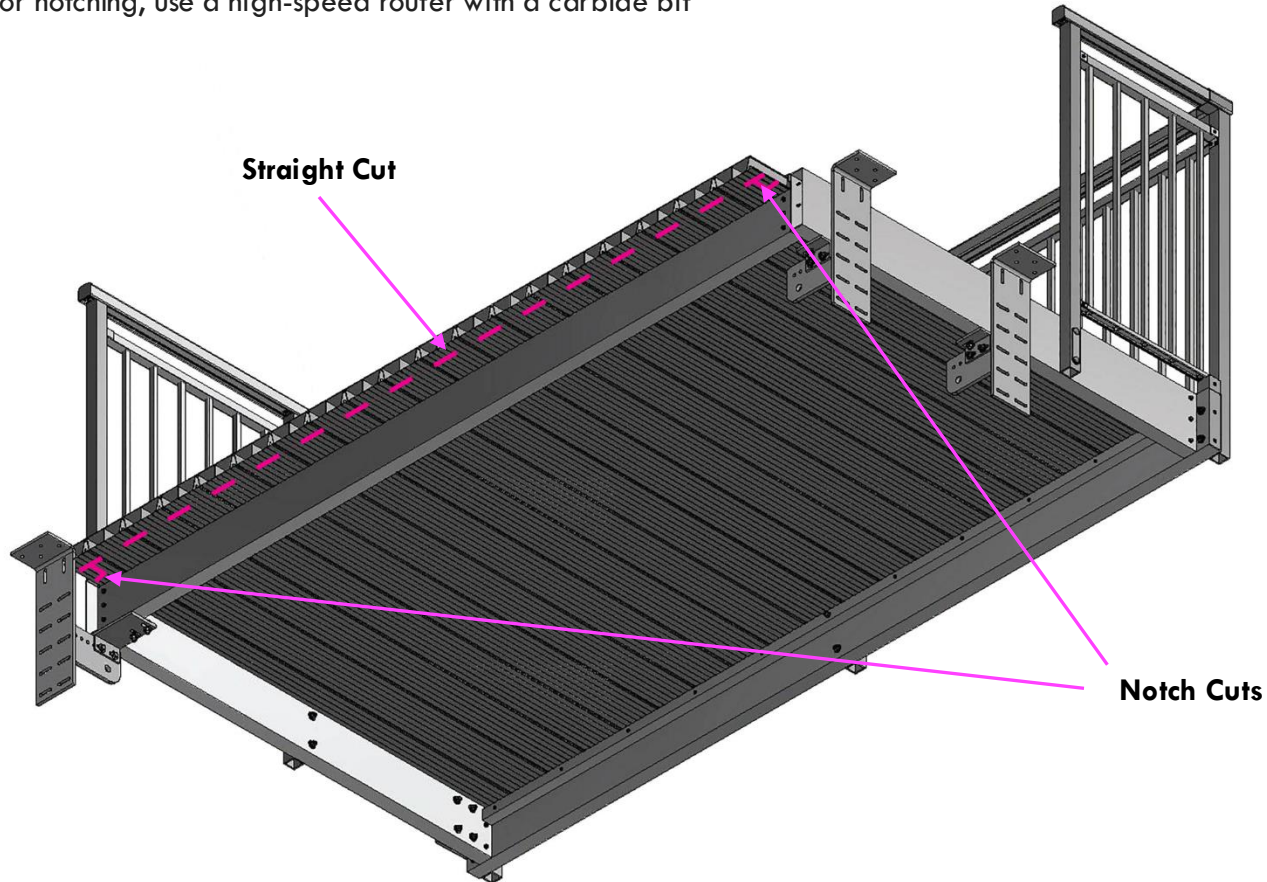
# Tie Rod Knife Plate



# Trimming & Notching Deck Boards

Prior to balcony being hung, trim or notch deck boards to contour door openings

- For straight cuts, use a track saw with a non-ferrous high tooth blade (minimum 80 count)
- For notching, use a high-speed router with a carbide bit





# Installation Videos

Visit: <https://www.levantealuminum.com/balcony-installation/> to watch installation videos.

UNIVERSAL BALCONY INSTALLATION



UNIVERSAL BALCONY ASSEMBLY



DECK TRIMMING

